

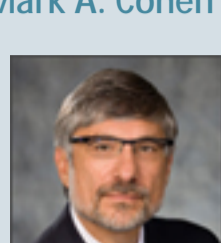


RFF Academic Update is a biannual newsletter from Resources for the Future that alerts subscribers to new RFF research and policy analysis on environmental, energy, and natural resource issues.

Resources for the Future is pleased to send you our second edition of the "RFF Academic Update." As you wrap up this semester and begin to focus on your research and preparing for next year's courses, I hope you will take a minute to see what we have been up to over the past few months. Recent publications cover a wide range of topics: water quality and availability, the cost of air quality and who pays?, design of climate mitigation policies, subsidizing anti-malarial drugs, pricing of passenger travel in Mexico, and more. We have also highlighted several new RFF resources that would be appropriate in the classroom.

I invite you to explore the RFF website for topics of interest to you whether for research or teaching, visit RFF when you are in DC, and consider presenting a paper at our academic workshops. I hope you will find the RFF Academic Update a useful introduction to RFF and look forward to hearing from you with any comments or questions.

Mark A. Cohen



Vice President for Research & Senior Fellow, RFF
Professor of Management & Law, Vanderbilt University
cohen@rff.org
(202) 328-5167

New Fellows at RFF

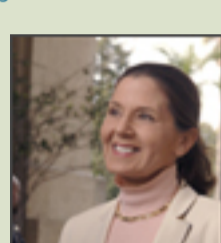
Joshua Linn



Joshua Linn joined RFF as a fellow in March 2010. Previously, Linn was an assistant professor in the Economics Department at the University of Illinois at Chicago and a visiting research scientist at MIT. Linn's research focuses on firms' responses to environmental regulation and market incentives. In his research on the manufacturing sector and new vehicle markets, he has empirically studied the effect of energy prices on energy efficiency and new vehicle fuel economy. He has published in leading general interest and field journals in environmental, energy, and health economics. Linn received his Ph.D. in economics from MIT and his B.A. in astronomy and physics from Yale University.

New Visiting Scholars

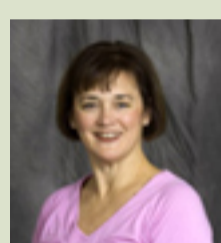
Lynn Scarlett



Lynn Scarlett joined RFF as a visiting scholar in March 2010. Her work will focus on climate change effects on land, water, and wildlife and related adaptation strategies; landscape-scale conservation policies; and ecosystem markets. Scarlett served as deputy secretary and chief operating officer of the Interior Department from 2005 to 2009. Scarlett is author of numerous publications on incentive-based environmental policies and served in 2009 as the Zurich Financial Services Distinguished Visiting Lecturer on Climate Change at the Bren School of Environmental Science and Management at the University of California, Santa Barbara. She also has been an independent consultant with the Environmental Defense Fund on issues pertaining to urban greening, ecosystem services, and coastal restoration.

New Appointments

Margaret Walls



Senior Fellow Margaret Walls has been awarded the first Thomas J. Klutznick Chair at RFF. Walls will use the chair to develop a body of research on city parks and urban open space, a natural extension of her work on recreation and conservation issues with the [Outdoor Resources Review Group](#). Walls is widely published in journals such as *Journal of Urban Economics*, *American Journal of Agricultural Economics*, *Land Economics*, and the *Review of Economics and Statistics*. She received her Ph.D. in economics from the University of California, Santa Barbara.

Thomas Klutznick spent most of his career as a real estate developer who worked to find a balance between growth and environmental protection. He served on the RFF Board of Directors from 1985 to 1994.

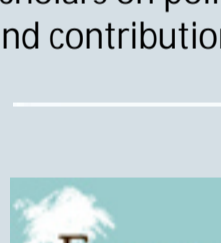
RFF in the Classroom

New work from RFF geared toward teaching environmental economic theory and practice:

U.S. Climate Policy and the Shape of International Agreements

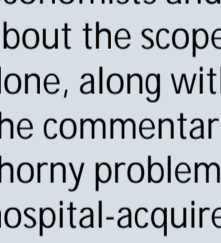
Last month RFF Senior Fellow [Raymond Kopp](#) wrote a [four-part series](#) on RFF's Climate Policy blog [Weathervane](#). These four posts provide a view of Copenhagen from a distinctly American perspective, blending global economics with domestic U.S. politics in a clear and concise manner.

Launched in 1997, Weathervane was designed to advance and inform debates surrounding the environmental and economic aspects of climate change. The site features daily updates and observations from our scholars on policy developments, discussions of the latest RFF research, and contributions from distinguished experts.



The [RFF Forest Carbon Index](#) is a new RFF initiative to compile and display global data relating to biological, economic, governance, investment, and market readiness conditions for every forest and country in the world. The website contains interactive maps, publications and data in a reader friendly format.

RFF's [Weekly Policy Commentary](#) series offers insights on a broad range of environmental, energy, natural resource, and public health issues. You'll find short, reader-friendly essays by experts in the field, mainly economists and social scientists, telling you what you need to know about the scope of the problem, the latest evidence, and what can be done, along with suggestions for further reading. Ideal for classroom use, the commentaries also provide a fast way for people to stay current on thorny problems ranging from traffic congestion to energy policy to hospital-acquired infections. To receive the commentaries every week by email, sign up [here](#).



Issues of the Day
100 Commentaries on Climate, Energy, the Environment, Transportation, and Public Health Policy
Edited by [Ian W.H. Parry](#) and Felicia Day

Issues of the Day provides an easy way for students to learn about a diverse range of policy issues. The book provides a useful supplement for undergraduate- and graduate-level course reading, a reference guide for professionals, and a way for the general reader to quickly develop an informed perspective on the most important policy problems of the day. The essays are written by world renowned scholars, mostly economists, and provide useful insights on policy problems that are often complex and poorly understood. *Issues of the Day* will be available in late April from [RFF Press/Earthscan](#).

Events

Energy Policy Symposium: Distributional Aspects of Energy and Climate Policy

In January of this year, RFF, the University of Chicago, and the University of Illinois at Urbana-Champaign held a research conference in Washington on the Distributional Aspects of Energy Policy and Climate Change. This was the first of an annual series of research symposia addressing major topics in energy policy. The conference brought together senior policymakers and leading researchers from the fields of economics, physical sciences, computational sciences, and law.

You can download all of the [presentations](#) from the conference on RFF's website.

Upcoming Events

The Porter Hypothesis at 20: Can Environmental Regulation Enhance Innovation and Competitiveness?

Montreal, Canada - June 27-28, 2010

RFF and [Sustainable Prosperity](#) will host leading scholars in the field of environmental and resources economics for a high-level dialogue in Montreal this June 27 and 28. Growing interest in climate policy and the 20th anniversary of the "Porter Hypothesis" make this an opportune time to assess the state of knowledge and identify future research needs on this important topic.

Contact Mark Cohen at cohen@rff.org for more information.

Valuing Information: Methodological Frontiers and New Applications for Realizing Societal Benefits

Washington, DC - June 28-29, 2010

RFF and NASA will host a two-day workshop exploring innovative methodologies and applications of value-of-informing research for realizing societal benefit. The meeting will bring together participants representing the public and private sectors to discuss a series of commissioned papers on the topic of the economic value of information focused on public health and space.

Contact Molly Macauley at macauley@rff.org or Ramanan Laxminarayan at mailto:laxminarayan@rff.org for more information.

[Click here to join the RFF Academic Update mailing list.](#)

Recently Published Journal Articles

A full list of journal articles is available [here](#).

EU-ETS and Nordic Electricity Prices: A CVAR Analysis [Harrison Fell](#) | *Energy Journal* | 2010 | Vol. 31, No. 2 | Related Discussion Paper: [08-31](#)

Come Rain or Shine: Evidence on Flood Insurance Purchases in Florida [Erwann Michel-Kerjan](#) and [Carolyn Kousky](#) | *Journal of Risk and Insurance* | January 2010

Clinical and Economic Outcomes Attributable to Health Care-Associated Sepsis and Pneumonia | [M.R. Eber](#), [Ramanan Laxminarayan](#), [E.N. Perencevich](#), and [A. Malani](#) | *Archives of Internal Medicine* | 2010 | Vol. 170, No. 4 | pp. 347-353

Does Trade Help or Hinder the Conservation of Natural Resources? | [Carolyn Fischer](#) | *Review of Environmental Economics and Policy* | Winter 2010 | Vol. 4, No. 1 | pp. 103-121

Putting Free Riding to Work: A Partnership Solution to the Common Property Problem | [Martin D. Heintzelman](#), [Stephen W. Salant](#) and [Stephan Schott](#) | *Journal of Environmental Economics and Management* | May 2009 | Vol. 57, No. 3 | pp. 309-320

The Welfare Costs of Unreliable Water Service | [Stephen W. Salant](#), [Lucas Davis](#), [Brian Baisa](#) and [William Wilcox](#) | *Journal of Development Economics* | 2010 | Vol. 92

The Economics of Water Quality | [Sheila Olmstead](#) | *Review of Environmental Economics and Policy* | Winter 2010 | Vol. 4, No. 1 | pp. 1-19

The Economic Valuation of Environmental Amenities and Disamenities: Methods and Applications | [Sheila Olmstead](#) and [Robert Mendelsohn](#) | *Environment and Resources* | November 2009 | Vol. 34 | pp. 325-347

Can Field Experiments Return Agricultural Economics to the Glory Days? | [David H. Herberich](#), [Steven D. Levitt](#) and [John A. List](#) | *American Journal of Agricultural Economics* | 2009 | Vol. 91, No. 5 | pp. 1259-65

Who Pays for Cleaner Air? Evidence from the Nitrogen Oxides Budget Trading Program | [Joshua Linn](#) | *Journal of Environmental Economics and Management* | 2010 | Vol. 59, No. 1 | pp. 1-14

The Political Economy of Marine Reserves: Understanding the Role of Opportunity Costs | [M. Smith](#), [J. Lynham](#), [James N. Sanchirico](#), and [J. Wilson](#) | *Proceedings of the National Academies of Sciences* | January 2010

Spatial Management of Invasive Species: Pathways and Policy Options | [James N. Sanchirico](#), [Heidi J. Albers](#), [Carolyn Fischer](#), and [Conrad Coleman](#) | *Environmental and Resource Economics* | November 2009

Regional Patterns of U.S. Household Carbon Emissions | [William A. Pizer](#), [James N. Sanchirico](#), and [Michael Batz](#) | *Climatic Change* | March 2010 | Vol. 99

Recently Accepted Journal Articles

Designing Climate Mitigation Policy | [Joseph Aldy](#), [Alan J. Krupnick](#), [Richard G. Newell](#), [Ian W.H. Parry](#), and [William A. Pizer](#) | *Journal of Economic Literature* | Forthcoming | Related Discussion Paper: [08-16](#)

Should New Antimalarial Drugs Be Subsidized? | [Ramanan Laxminarayan](#), [Ian W.H. Parry](#), [David L. Smith](#), and [Eili Klein](#) | *Journal of Health Economics* | Forthcoming | Related Discussion Paper: [06-43](#)

How Should Passenger Travel in Mexico City be Priced? | [Ian W. H. Parry](#) and [Govinda R. Timilsina](#) | *Journal of Urban Economics* | Forthcoming | Related Discussion Paper: [08-17](#)

Public-Private Co-Production of Risk: Government Indemnification of the Commercial Space Launch Industry | [Tim Brennan](#), [Carolyn Kousky](#), and [Molly K. Macauley](#) | *Risk, Hazards & Crisis in Public Policy* | Forthcoming | Related Discussion Paper: [09-38](#)

Antibiotic Effectiveness: New Challenges in Natural Resource Management | [M. Hermann](#), and [Ramanan Laxminarayan](#) | *Annual Review of Resource Economics* | Forthcoming

From Science to Applications: Determinants of Diffusion in the Use of Earth Observations | [Molly K. Macauley](#), [Joe Maher](#), and [Jihh-Shyang Shih](#) | *Journal of Terrestrial Observations* | Forthcoming

Is a Donor in Hand Better than Two in the Bush? Evidence from a Natural Field Experiment | [Craig E. Landry](#), [Andreas Lange](#), [John A. List](#), [Michael K. Price](#), and [Nicholas G. Rupp](#) | *American Economic Review* | Forthcoming

What Happens in the Field Stays in the Field: Exploring Whether Professionals Play Minimax in Laboratory Experiments | [Steven D. Levitt](#), [John A. List](#), and [David H. Reiley](#) | *Econometrica* | Forthcoming

The Price of Gasoline and New Vehicle Fuel Economy: Evidence from Monthly Sales Data | [Joshua Linn](#) and [Thomas Klier](#) | *American Economic Journal: Economic Policy* | Forthcoming

