

February 2009 ■ RFF DP 09-03

Climate Change and Risk Management

*Challenges for Insurance, Adaptation,
and Loss Estimation*

Carolyn Kousky and Roger M. Cooke

1616 P St. NW
Washington, DC 20036
202-328-5000 www.rff.org

Climate Change and Risk Management: *Challenges for Insurance, Adaptation, and Loss Estimation*

Carolyn Kousky and Roger M. Cooke

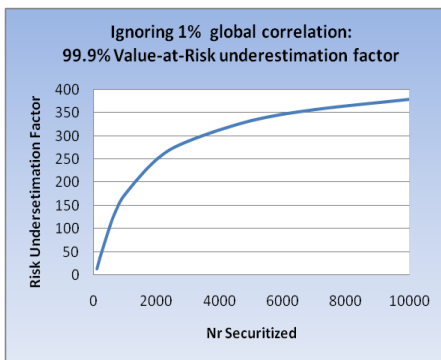
*“When sorrows come, they come not single spies
But in battalions.”*

King Claudius, Hamlet Prince of Denmark, Act 4 Scene 5

Executive Summary

Adapting to climate change will not only require responding to the physical effects of global warming, but will also require adapting the way we conceptualize, measure, and manage risks. Climate change is creating new risks, altering the risks we already face, and also, importantly, impacting the interdependencies between these risks. In this paper we focus on three particular phenomena of climate related risks that will require a change in our thinking about risk management: global micro-correlations, fat tails, and tail dependence. Consideration of these phenomena will be particularly important for natural disaster insurance, as they call into question traditional methods of securitization and diversification.

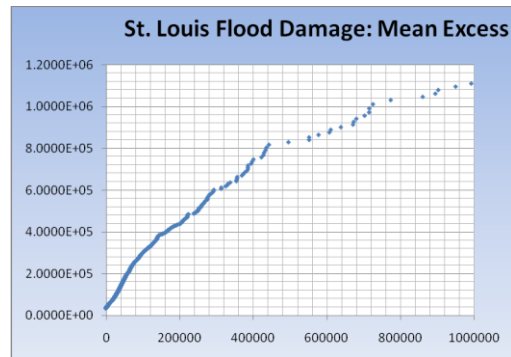
Global micro-correlations between variables—such as investment products, insurance



policies, or catastrophe bonds—obtain when all variables in a relevant class have small positive correlations that would be imperceptible if the variables were considered in isolation. When such variables are aggregated, the correlations of the aggregations will balloon. If micro-correlations are ignored when calculating reserves under a Value-at-Risk management regime, risks will be woefully underestimated, as seen in the figure to the left. A manager may think his residual risk is 0.1%, when in reality it is much higher. Moreover, risk underestimation grows with the number of products

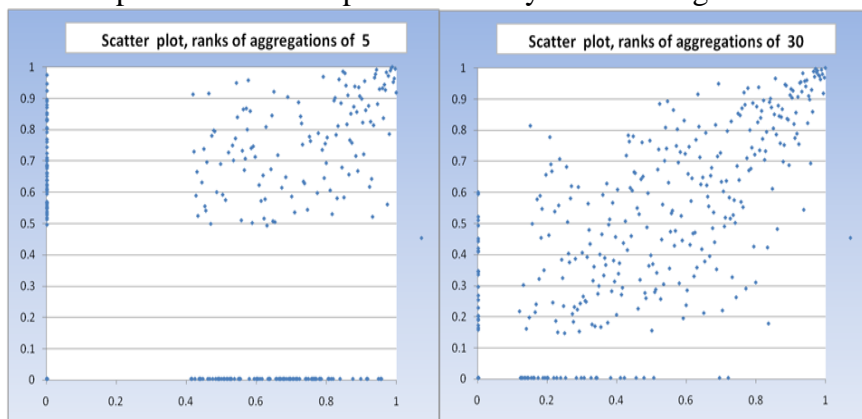
securitized.

Fat tailed loss distributions resulting from uncertainty in parameters of ‘thin tailed’ distributions have recently captured the imagination of economists, thanks to the work of Martin Weitzman. Catastrophe modeling firms study the ways in which extreme events compound damages to create fat tails and damages from many extreme events have been shown to fit fat tailed distributions. Financial risk managers identify fat tails by “mean excess” plots, which show the expected value of damage variable X above threshold x , as a function of x . Thin tailed distributions have constant mean excess, but fat tails push this excess ever upward. This increasing mean excess is seen in the figure here,



which is based on flood damages in Saint Louis County, Missouri between 1991 and 1995. Fat tails increase the solvency risk, thus mooting the ‘actuarial fair price’ of insurance. Tails may become fatter under aggregation, but they may not; and indeed aggregation is sometimes an effective abatement strategy.

Tail dependence is distinct from simple correlation and tail fatness. It occurs when dependence concentrates in high values. Distributions with high correlation may nonetheless be relatively independent except for very high values. Tail dependence may or may not cohere with tail obesity, and may or may not be aggravated by aggregation. Analyses of flood claims from the state of Florida reveal a tail dependence that is amplified by aggregation. The leftmost picture shows a percentile scatter plot of monthly flood damages for two randomly chosen aggregations



of five distinct Florida counties (months without damage give the points on the axes). The right picture shows a similar plot for 30 distinct counties. The amplification of tail dependence has obvious implications for securitization: aggregating policies and marketing tranches of the aggregations

may be spreading this dependence over many unsuspecting investors, thereby conscripting a ‘battalion of sorrows.’ On the other hand, conditioning on the ‘southern quadrant’ would allow private market securitization to function.

This preliminary project report introduces these three phenomena, providing examples and discussing the implications for estimating losses from climate change or particular extreme events, adaptation policy, and natural disaster insurance markets. We offer an initial foray into the mathematical properties of micro-correlations, fat tails, and tail dependence; conduct an exploratory analysis of flood insurance claims; and offer some tentative policy suggestions.

Key Words: tail dependence, micro-correlations, fat tails, damage distributions, climate change

JEL Classification Numbers: Q54, G22, C02

Contents

Executive Summary	i
1. Introduction.....	1
2. Climate Change: Altering Tail Behavior and Dependencies	2
3. Implications for Loss Estimation, Adaptation, and Insurance	3
4. Definitions and Properties	8
5. Tails and Dependencies: Flood Insurance Claims in Missouri and Florida	15
6. Policy Implications	18
Appendix: L_p Symmetric Measures.....	21
References.....	26

Climate Change and Risk Management: *Challenges for Insurance, Adaptation, and Loss Estimation*

Carolyn Kousky* and Roger M. Cooke

1. Introduction

Adapting to climate change will not only require responding to the physical effects of global warming, but will also require adapting the way we conceptualize, measure, and manage risks. Climate change is creating new risks, altering the risks we already face, and also, importantly, impacting the interdependencies between these risks. In this paper we focus on three particular phenomena of climate related risks that will require a change in our thinking about risk management particularly vis-à-vis natural disaster insurance: global micro-correlations, fat tails, and tail dependence.

Global micro-correlations are very small—even undetectable—correlations between variables, such as insurance policies. If unaccounted for, these micro-correlations can undermine common diversification strategies, as shown in sections three and four of this paper. Fat tailed damage distributions are those in which the probabilities of ever more serious damage decrease slowly relative to the extent of the damage. The implications for climate policy are now under active discussion. Less understood is tail dependence, or the possibility that bad events happen together. Research on these topics is needed on three distinct fronts. First, further mathematical research is needed on the properties of and relations between these three issues. Second, data analysis will be required to determine to what extent these three phenomena can be detected and measured in damage data. Finally, policy research on the design and implementation of new risk management approaches will be necessary based on the results of the first two research efforts. This paper offers initial forays into all three of these research areas.

The next section of the paper provides some examples related to climate change of micro-correlations, fat tails, and tail dependence. To motivate our interest in these issues, section three discusses the implications of these phenomena for loss estimation, adaptation policy, and particularly natural disaster insurance markets. Section four formally defines and discusses the mathematical properties of micro-correlations, fat tails, and tail dependence. Section five analyzes data on flood insurance claims from Missouri and Florida, demonstrating the presence of positive correlation in damages across counties, the fat-tailed nature of the distribution of

* Address correspondence to: Carolyn Kousky, Resources for the Future, 1616 P Street, NW, Washington, DC. 20036. Email: kousky@rff.org

© 2008 Resources for the Future. All rights reserved. No portion of this paper may be reproduced without permission of the authors.

Discussion papers are research materials circulated by their authors for purposes of information and discussion. They have not necessarily undergone formal peer review.

damages data, and the presence of tail dependence that grows as claims are aggregated. Section 6 concludes with policy recommendations. A mathematical appendix shows how aggregation can amplify tail dependence in common deterioration models.

2. Climate Change: Altering Tail Behavior and Dependencies

As stated in the introduction, this paper is concerned with three particular phenomena of climate change related risks: global micro-correlations, fat tails, and especially tail dependence. Global micro-correlations are tiny, positive correlations between all variables under consideration. These correlations can be so small that they would most likely go undetected. Even correlations this small, however, can pose problems to risk managers, as discussed in the following two sections. This type of global correlation could arise when every variable is correlated with some latent variable. An example comes from El Niño, which induces correlation between climate events in various parts of the globe. In an El Niño year, precipitation is likely to be more extreme in California, leading to mudslides and floods; nutrient-poor water is likely to cause fish catch declines in Peru; and drier conditions are more likely in Australia, increasing the chance of bushfires. An increase in sea level rise worldwide or a change in the strength of hurricanes could also potentially introduce micro-correlations across losses in geographically diverse areas.

The second concept we consider is fat tails. There is growing recognition among economists that, when it comes to climate change, “the tails matter.” There is already evidence that damages from many disasters follow distributions with thicker tails (e.g., Malamud and Turcotte 2006). Some research suggests that climate change may be directly fattening the tails of the distributions of many extreme events (e.g., U.S. Climate Change Science Program 2008). The uncertainty surrounding climate change impacts may also generate fat tails, as in Weitzman’s (2008) analysis, where updating a non-informative prior yields a fat-tailed posterior damage distribution.

Finally, it is not just thick tails that matter for climate change policy, but also tail dependence, or how likely bad outcomes are to occur together. This latter problem has received surprisingly little attention among climate policy scholars and practitioners. A simple example of tail dependence comes from considering the damage distributions associated with computer networks and some highly infectious tropical diseases, which are predicted to spread as the climate warms. Events in the tail of the damage distribution associated with potential computer network problems include network failure and malicious attacks. Events in the extreme tail of the tropical diseases damage distribution not only include rising infection and mortality rates, but also mass quarantines. These negative outcomes, however, are not independent. If people are quarantined at home, the number of people telecommuting will increase dramatically, stressing computer networks and leading to failures and vulnerabilities that could be exploited. That is, if society is in the tail of disease impacts, it is also more likely to be in the tail of computer security damages.

Another example of tail dependence is seen between property insurance claims and car insurance claims. For low levels of claims there is not much correlation between the two insurance lines. For very large storms, however, there is a dependency between the two variables. When there are many property claims, there tend to be many motor vehicle claims as

well. This has been observed for insurance data covering over 700 storm events in France (Lescourret and Robert 2006).

Tail dependence among distributions related to climate change could arise in two distinct ways. First, there could be a causal link between two variables, such that when one variable takes on an extreme value, it pushes the other variable to do so, as well. Pandemics and network security provide an example. For policy, it is important to note that this type of dependence will often be unidirectional. That is, a disease pandemic increases the likelihood of network failure, but not vice versa. Tail dependence can also arise because a third variable which is normally dormant or latent pushes both variables into extremes when activated. For instance, a high-activity hurricane year could create tail dependencies between damages across areas of the U.S., Caribbean, and Mexico.

In theory, there could be tail dependence across more than two variables, as suggested by the El Niño example. Another telling example of dependencies across multiple loss distributions as driven by climate change is the European heat wave in the summer of 2003. The temperatures for the summer were extremely far out in the tail of the temperature distribution (Schär, Vidale et al. 2004), leading to extreme losses across multiple sectors. The heat wave led to uninsured crop losses of near \$12.3 billion, extensive fires across Europe burning 647,069 hectares, the shutting down of nuclear power plants in France from lack of river water for cooling, soaring electricity spot market prices, rockfalls from melting permafrost, decreased yields and lower quality harvests, excess deaths of between 22,000 and 35,000 across Europe, and excess mortality from higher ground-level ozone and particulate matter concentrations (De Bono, Giuliani et al. 2004; Schär and Jendritzky 2004; Stedman 2004). With more heat waves, events in the tail of the distributions related to mortality, crop yields, wildfires, and electricity pricing are more likely to occur together.

The European heat wave and the multiple impacts of El Niño events demonstrate that the climate system is linked globally in ways that create multiple dependencies. As yet another example, there is a strong correlation between Atlantic tropical cyclone activity and atmospheric dust from the Saharan Air Layer (Evan, Dunion et al. 2006), as well as strong correlation between the landfall of intense hurricanes in the U.S. and rainfall in the Western Sahel region of West Africa, potentially because both are driven by global oceanic thermohaline processes (Gray 1990). There are other dependencies that are not well understood, such as multiple events tending to occur together, sometimes referred to as “clustering” (RMS 2008). Active hurricane seasons in 1995 and 2004-2005 are good examples, as are the two severe windstorms that caused damage in Europe in 1999 (Riker 2004). These intricate dependencies should make us cautious of simple or ad hoc consideration of climate related risks.

3. Implications for Loss Estimation, Adaptation, and Insurance

There are three areas where micro-correlations, fat tails, and tail dependence as introduced or heightened through climate change could have significant implications: loss estimations, adaptation policies, and of particular emphasis is in this paper, insurance for natural disasters.

3.1. Loss Estimation

Researchers and policymakers have sought estimates on the aggregate costs of climate change to use in considering various mitigation options, as well as estimates of regional or local climate change damages in order to improve planning. The costs of particular extreme events—and how they may be altered under climate change—are also of interest, particularly to insurance companies. All these various exercises in estimating aggregate losses, whether for global changes in mean temperature or for individual extreme events, will be underestimates if fat-tailed distributions are not used when they are appropriate.

Further, too often, impact models for changes in climate are done independently for various sectors of the economy, or specific ecological systems, and interactions between impacts are often ignored (Tol 2002). Similarly, analysis of different events is often done in isolation, without consideration of the correlations between events (Muir-Wood 2004). Many systems are coupled, however, and models of climate change impacts or the costs of disasters that do not address such interconnections, and the possible creation of new interdependencies as the planet warms, could significantly miss-estimate impacts.

For example, insurance companies rely on catastrophe models, often run by private companies, to assess the expected losses in an area where they have exposure (Grossi, Kunreuther et al. 2005). Many of these models have neglected dependencies across loss distributions. Hurricane Katrina demonstrated quite vividly many of the dependencies created by extreme events, however, and that neglecting them can lead to underestimates of losses. Hurricane Katrina was an event, like the 1906 fire and earthquake in San Francisco, where the secondary consequences caused more damage than the original event (RMS 2006). With an extreme hurricane or earthquake, other losses become correlated with the event, inflating damages. Catastrophe modelers are beginning to address this phenomenon. Catastrophe modelers have also attempted to incorporate another type of tail dependence, event “clustering,” whereby severe events occur in close succession (RMS 2006). These improvements in the models will aid companies in developing more accurate pricing and diversification strategies.

3.2. Adaptation

Consideration of tail dependence may suggest policies that could reduce vulnerability to changes in extreme events. Spatio-temporal tail dependence has been calculated for precipitation extremes (Kuhn, Khan et al. 2007). In some situations, though, tail dependencies are not simply a product of the global climate system but have been induced by human actions and it may be possible to mitigate these risks by identifying the underlying cause coupling the tails of the loss distributions.

When we are aware of and understand the nature of the dependence between loss distributions, there will be times when adaptation policy might effectively de-couple risks. For example, take the 1906 earthquake in San Francisco. This event showed the tail dependence between earthquakes and fires; it was both an extreme earthquake and a severe fire that damaged the city. The fire burned for 3 days and devoured 28,000 buildings (Steinberg 2000). The cause of this dependence was gas and water pipes that could not withstand a high magnitude quake. If gas pipes break, fire is more likely, and if water pipes break, flames cannot be controlled, leading

any fire to likely be a conflagration. De-coupling the tails of these two risks involves the design and installation of pipes that can withstand extreme earthquakes. Surprisingly, there are still many water pipes in the Bay Area that have not been upgraded to withstand earthquakes, although retrofitting is currently ongoing.

Thinking through the response of individuals and all sectors of the economy to an extreme event can also help us identify and understand tail dependencies. An example comes from Hurricane Katrina. Models of potential losses assumed that the pumps in New Orleans would keep flooding in the city to a minimum. However, the extreme nature of Katrina led to an evacuation of people, including pump managers, as well as a power outage, reducing pumping capacity and leading to much more extensive flood damage in the city than was expected (RMS 2005). This suggests that policies aimed at adapting to the potential increases in extreme weather events from climate change should consider adding redundancies in protective systems and thinking through the impact of not only loss of personnel and power, but damage to all critical infrastructure, including communications.

3.3 Natural Disaster Insurance

Finally, neglect of micro-correlations, fat tails, and tail dependence could have the largest impact on the insurance market for natural disasters (for more on the insurance of natural disasters, see for example: Woo 1999). The last several decades have seen a rise in the economic costs of disasters, and, of particular concern to the insurance industry, in insured losses (Zimmerli 2003; Wharton Risk Management and Decision Processes Center 2008). While much of the rise in disaster losses has been due to increased exposure in hazardous areas—more buildings and people in harm's way—several weather-related extreme events are predicted to increase in severity and/or frequency with climate change. There is increasing concern about what impact this will have on the insurability of natural disasters (e.g., Mills 2005; Kunreuther and Michel-Kerjan 2007; Charpentier 2008). If risk is increasing over time, such that insurers do not believe they can accurately estimate expected losses, a key condition of insurability is violated. Further, if the premiums necessary for insurers to cover a disaster in a climatically changed world are greater than homeowners and businesses are willing or able to pay, the private insurance market will collapse. The impact of climate induced micro-correlations, fat tails, and tail dependence across different lines of insurance or different regions of the world is a further consideration for insurance companies in assessing response strategies to climate change.

Insurance and reinsurance markets rely on the law of large numbers. As independent risks are bundled, fluctuations around the mean die out. With positive dependence, the independence assumption of the law of large numbers is violated and the benefits from holding multiple policies are not necessarily obtained. Insurers already deal with local correlation in losses regarding natural disaster risks—when a disaster hits one home, it will have also hit other homes in the area—by presuming that disasters in different regions of the world are independent. If this is true, insurers can again put the law of large numbers to use and swap risk from different areas or purchase reinsurance, where the reinsurer diversifies globally and across different types of risk. If, however, there are undetected positive, global micro-correlations between the policies, aggregation will not reduce risk.

We provide a stylized example to show how this could happen. Suppose an insurance company sells a one-year catastrophic flood insurance policy covering \$10,000 in damages should a flood occur. Assume the historical probability of this event is 0.001 per year. The ‘actuarial fair price’ for this policy would be \$10 (probability times loss), but the insurance company will, of course, add on administrative costs, a solvency premium, and a profit margin to the premium it charges; we ignore this here. Following the regulatory requirements for insurance companies in the EU, termed Solvency II,¹ the firm’s risk management regime stipulates that cash reserves must be capable of covering claims with a 99.9% probability.² In this case, the company must keep \$10,000 in reserve to guard against insolvency, since this is the loss that would occur with probability 1-.999.

Now, suppose the company “securitizes” this risk; that is, they trade this policy for a 1/10,000-th share in a bundle of 10,000 similar policies. If these other risks are independent, then the bundle is effectively normally distributed with mean $10,000 \times \$10$, and standard deviation $\sqrt{(10,000) \times \text{stdev}(\text{one policy})} = 100 \times \$10,000 \times \sqrt{(0.001 \times 0.999)} = \$31,606.96$. To cover all claims with 99.9% probability, the bundle holder must have a cash reserve of \$197,672.90.³ The insurance company must contribute its share to this reserve, which is the total reserve divided by 10,000, or \$19.77. Instead of \$10,000, the insurance company needs to set aside only \$19.77, and the rest can be invested elsewhere. For \$19.77 per year from each shareholder, the bundle holder will be able to cover his exposure with probability 99.9%. Such are the apparent benefits of securitization.

What might go wrong with this sanguine business plan? Of course, the historical probability of flooding might not apply in present circumstances subject to global warming. That is already receiving attention in the literature (e.g., Milly, Betancourt et al. 2008). We draw attention instead to a threat which has so far escaped notice, global micro-correlations. The technicalities are discussed in the next section, but for the present we merely note the following: If each of the 10,000 policies had a small correlation, say 0.01 with every other policy, and if the bundle holder receives \$19.77 for each of the 10,000 policies, then the chance that the bundle holder is unable to pay claims is not 0.001, but in the neighborhood 0.38. The risk is underestimated by a factor 380. This small correlation means that the chance of two given policies filing claims is not 10^{-6} , as it would be if they were independent, but 1.1×10^{-5} (see section 4.1 for the calculations). This is troubling for three reasons: (1) such small correlations would likely escape notice, unless one knew how to look for them (and we have not been looking), (2) ignoring these correlation leads to a large underestimation of the risk, and (3) climate change suggests these micro-correlations are quite plausible.

¹ Solvency II outlines regulations for insurance companies operating in Europe and is intended to create one European insurance market. The three pillars of solvency II are: (1) quantitative requirements, such as the solvency probability, ultimately put at .005, (the earlier value used here, .001, was based on the Basel II protocol); (2) governance and supervision requirements, and (3) transparency and disclosure requirements.

² This is the so-called Value-at-Risk (VaR) risk management scheme.

³ The formula for this calculation is presented in section 4.1.

Tail dependence could also be troubling for insurers of natural disaster risk. Risk Management Solutions (RMS), a catastrophe modeling firm, has been exploring notions similar to tail dependence relevant to insurers following Hurricane Katrina: “loss amplification,” “Super Cats,” and “cat following cat” events (RMS 2005; Muir-Wood and Grossi 2008). Loss amplification refers to large losses that induce even larger losses. Specifically related to insurance company losses, amplification could be caused by increases in the costs of repair when demand for rebuilding overwhelms supply, damage that results when repair is delayed causing further deterioration, relaxation of assessment of claims in the frenzied claims processing after a disaster, or political pressure or litigation requiring expansion of coverage (Muir-Wood and Grossi 2008). Super Cats are those catastrophes that are so large that they trigger other hazards, creating “cascading consequences,” and leading to losses across multiple lines of business (RMS 2005)—in the language of this paper, this is the result of tail dependence. So-called ‘cat-following-cat’ events refer to the unidirectional tail dependence discussed earlier, where one disaster of an extreme magnitude is likely to trigger another, such as the 1906 San Francisco earthquake triggering the massive fire.

Hurricane Katrina created increased interest in dependencies across loss distributions since losses from the storm not only included wind and rain damage, but damage from breached levees and storm surge, power outages, fires that could not be put out, business interruptions, toxic spills, a rise in energy costs from damage to rigs and refineries, and increased costs of reconstruction (this latter effect is referred to as “demand surge,” see: Hallegatte, Boissonnade et al. 2008). Losses to some lines of insurance that saw many claims after Katrina had not been heavily hit in other catastrophes, such as cargo, inland marine and recreational watercraft, floating casinos, onshore energy, automobile, worker’s comp, health, and life insurance (RMS 2005), demonstrating the tail dependence across these lines of business. While not as related to possible impacts of climate change, the 9/11 terrorist attacks also demonstrated that for extreme events, multiple lines become affected (Riker 2004). When these tail dependencies are not considered, the exposure of an insurance company can be underestimated.

Amplified losses from Katrina have led modelers to attempt to more fully incorporate the correlations across locations, business lines, coverages, and perils for Super Cats in the catastrophe models insurers use to estimate potential losses (RMS 2005; Muir-Wood and Grossi 2008). These interactions can sometimes be surprising, such as the fact that the shortage of refined petroleum from Katrina led two already troubled airline companies in the U.S. to file for bankruptcy since jet fuel prices rose after Katrina (RMS 2005). Another surprising example comes from the Kobe earthquake, which indirectly led to the collapse of Barings Bank as one of their traders had recklessly bet the Nikkei would recover quickly from the quake, but it did not. RMS is also examining whether there are points—phase transitions—where a system moves from roughly independent damages into the tail region of highly correlated damages. One example they give is a forced evacuation, since once evacuation occurs, properties deteriorate, there is a lack of personnel for response and operation of critical facilities, and rebuilding costs rise (RMS 2005).

Tail dependent risks could lead to catastrophic losses, which could threaten the solvency of insurers (for more on catastrophes and insurance see: Zeckhauser 1996). To cover losses in the tail, insurance companies may turn to reinsurance or to the financial markets through insurance linked securities, such as cat bonds. For holding the high risk in the tails of distributions,

investors would want a higher return on equity or reinsurers would want higher premiums, potentially leading insurers to reduce coverage or charge higher premiums themselves (Kunreuther and Michel-Kerjan 2007). If particularly extreme, there may not even be a market for these levels of losses. Tail dependence could thus be one of the causes of the low levels of reinsurance for high damage levels and the high prices for reinsurance and cat bonds that have been documented (Froot 2001; Froot 2008; Lane and Mahul 2008). (Of course, knowledge or supposition of micro-correlations may also be a cause of the observed high prices and low coverage for high levels of damages.) It is possible for these reasons, then, that private (re)insurance may fail to operate in the dependent and thus high-potential-loss region of the distribution, suggesting a possible role for government intervention. Events that stress (re)insurance markets worldwide have been termed cataclysms by Cutler and Zeckhauser (1999) and they suggest a need for financial markets or government involvement in these cases. This is discussed further in the next section.

Further complicating the operation of insurance for tail-dependent loss profiles is the likelihood that the existence or extent of the dependence will never be known with certainty. Insurers have been found to charge an “ambiguity premium” to insure losses where the probabilities are uncertain or to fail to offer coverage at all (Kunreuther and Hogarth 1992). Until the relevant tail dependencies for insurance companies are understood, such aversion to ambiguity could cause low levels of supply in (re)insurance markets for catastrophes.

Disturbingly for the market overall, tail dependence has been found between equity returns across insurance markets in different regions of the world. Slijkerman (2006) finds tail dependence between stock losses of insurers, potentially because their loss holdings are similar or due to similarities in investment risks. Sheremet and Lucas (2008) estimate that for Europe-America and Europe-Australia/Asia, about 60% of the dependence between companies is due to correlated losses, as opposed to correlation in investment portfolios. The percentage is higher for America-Australia/Asia. The authors also find some evidence to suggest that this dependence is increasing over time, potentially from climate change. Interestingly, the authors find far less correlation between American and Australian-Asian markets, suggesting some areas where diversification can occur (Sheremet and Lucas 2008). Even in these areas, however, diversification could be hindered by the fact that the insured portion of losses from natural hazards are concentrated in only a few countries worldwide (Zimmerli 2003). If large losses are tending to be correlated across the globe, this will fundamentally undermine the ability of (re)insurers to diversify natural disaster risk.

4. Definitions and Properties

This section formally introduces the mathematics of global micro-correlations, fat tails, and tail dependence.

4.1 Global Micro-correlations

As discussed in the previous section, it could be that climate change will begin to introduce small global correlations across some loss variables, such as disaster claims. A curious feature, first noticed in connection with aggregating automobile emissions (van Oorschot, Kraan

et al. 2003) is that aggregations of many weakly correlated random variables become themselves strongly correlated. A small overlooked correlation, whether due to global warming or some other cause, could undermine the common risk diversification practices in the insurance and investment industries of securitizing risks.

To see this, let X_1, \dots, X_{2N} be identically distributed random variables with correlation $\rho(X_i, X_j) = \rho$, and let σ be the standard deviation of each X_i . The correlation of two sums of N distinct variables is given by:

$$(1) \quad \rho \sum_{i=1 \dots N} X_i, \sum_{i=N+1 \dots 2N} X_i = \frac{N^2 \rho \sigma^2}{N\sigma^2 + N(N-1)\rho\sigma^2} = \frac{N\rho}{1 + (N-1)\rho}.$$

Evidently, this goes to 1 as $N \rightarrow \infty$. Ignoring correlation ρ , we would compute the standard deviation of $\sum_{i=1 \dots N} X_i$ as $\sigma\sqrt{N}$. Taking ρ into account gives:

$$(2) \quad StDev(\sum_{i=1 \dots N} X_i) = \sigma\sqrt{N}\sqrt{1 + (N-1)\rho}.$$

Thus, the independence assumption underestimates the standard deviation by a factor $\sqrt{1 + (N-1)\rho}$.

If μ is the mean of each X_i , then using the normal approximation and ignoring dependence, we would calculate the probability that $\sum_{i=1 \dots N} X_i$ exceeds a threshold T as

$$(3) \quad Pr(\sum_{i=1 \dots N} X_i > T; X_i \text{ independent}) \sim 1 - \Phi\left(\frac{T - N\mu}{\sigma\sqrt{N}}\right),$$

where Φ is the standard normal cumulative distribution function. With dependence, we cannot compute exceedance probabilities without knowing the whole joint distribution; however a back-of-the-envelope estimation would be to simply modify the independent estimate by substituting the standard deviation (2) into (3), giving:⁴

⁴ This estimate is actually quite reasonable when ρ is small and the X_i 's are almost independent, for the following reason. For relatively small values of N , the correlation given in (1) will be small and summing $2N$ variables will be like summing independent variables; the result will look normal. For large N , the correlation is almost one, and adding an additional sum of N is like multiplying the first sum of N by 2, which preserves the shape of the distribution.

$$(4) \quad Pr(\sum_{i=1 \dots N} X_i > T;) \sim 1 - \Phi\left(\frac{T - N\mu}{\sigma(\sqrt{N + N(N-1)\rho})}\right).$$

Using the back of the same envelope, we can compute the relative error in the exceedence risk by dividing (4) by (3). Figure 1 shows the results when using the values for T , N , and $\rho = 0.01$ from section 3.3. The estimation error is large, even for modest values of N . Thus, the risk according to (4) for $N = 500$ is 0.1, a factor 100 higher than 0.001.

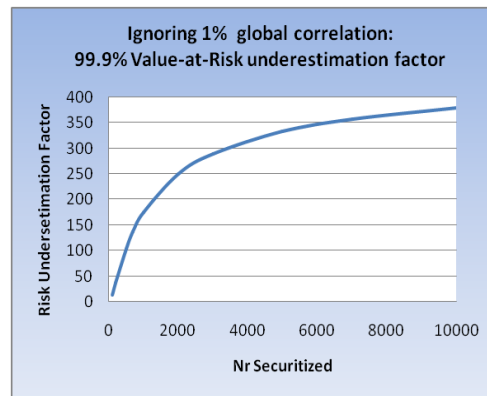


Figure 1: Risk Underestimation Factor

The consequences of the elementary formula (1) are far reaching. Much of the insurance and investment sector runs on “securitization,” that is, pooling small investment products, be they insurance policies, mortgages, loans, corporate bonds, etc. so as to reduce the fluctuations of the sum relative to the aggregate mean.⁵ This pooled product can then be cut into “tranches” and re-sold. If the products are independent, then the pooling and cutting will yield products with very low risk. However, a small effectively unobservable global correlation means that beyond a certain point, sums of N objects are almost fully correlated, and securitization can no longer reduce risk. Ensuring that private markets will be able to diversify risks evidently requires learning more about micro-correlations. Ironically, upper tail dependence, discussed below, can actually help. If the correlations are in the extreme values of the distributions, then at lower values the variables may be nearly independent.

⁵ Recently, various authors express concerns about the limits of diversification, based on the sums of independent, super-thick tailed distributions for which the mean is infinite (Chavez-Demoulin, Embrechts et al. 2005; Ibragimov and Walden 2007). The concern voiced here is based on dependence, not tail obesity.

4.2. Fat Tails

Thanks largely to Weitzman (e.g., 2007), the phenomenon of leptokurtic distributions, commonly known as fat or thick tailed distributions, have captured the imagination of the climate change community. With thick tails, ‘extreme outcomes are more likely’. Roughly, a distribution is said to have a fat (right) tail if its density $f(x)$ is asymptotically polynomial as x gets large.⁶ The most common example is the Pareto distribution with a density given by:

$$(5) \quad p(x) = \nu a^\nu / (a+x)^{\nu+1} \quad \alpha, \nu > 0.$$

The mean and variance of (1) are (see appendix):

$$(6) \quad \mu(X) = a/(\nu-1), \quad \nu > 1, \quad \text{and}$$

$$(7) \quad \sigma^2(X) = a^2 \nu / [(\nu-1)^2(\nu-2)], \quad \nu > 2.$$

The lower the parameter ν , the fatter the tail. For $\nu \leq 1$, the expectation is infinite, for $\nu \leq 2$, the variance is infinite.

An intuitive diagnostic for assessing tail obesity is the *mean excess*, defined at point x as the mean of $X-x$, given that $X > x$. If the mean excess is constant, then the distribution has an exponentially decreasing right tail (McNeil, Frey et al. 2005). Upward sloping mean excess plots indicate a fat tail. For the Pareto distribution, the mean excess is linear in x with slope equal to $1/(\nu-1)$, indicating a thick tail for $\nu > 1$.

The relationship between tail obesity and aggregation is not simple. In the appendix, the calculations with L_p symmetric processes show that summing positively correlated leptokurtic variables need not affect tail thickness. Other examples can be found in which independent sums of fat tailed distributions become more obese (Embrechts, Lambrigger et al. 2008). As shown in section five, flood claims data in St. Louis County has a pronounced fat tail, and the thickness declines as claims across municipalities are aggregated.

4.3 Tail Dependence

Tail dependence refers to the tendency of dependence between two random variables to concentrate in the extreme high values (known as upper tail dependence, UTD) or extreme low values (lower tail dependence, LTD). In this report, we shall always be concerned with high

⁶ For a precise definition, see McNeil, Frey et al.(2005).

values or UTD. Technically, upper tail dependence of variables X and Y is defined as the limit (if it exists, which it may not):

$$(8) \quad UTD(X, Y) = \lim_{r \rightarrow 1} \frac{\Pr(\text{both } X \text{ and } Y \text{ are above their } r\text{-percentiles})}{(1-r)}$$

$$= \Pr(X > r\text{-percentile} \mid Y > r\text{-percentile}).$$

If X and Y are independent, their tail dependence is zero. If their tail dependence is positive, then when one variable takes on an extreme value, it is more likely the other variable will as well. When thinking about climate change, we may be concerned about tail dependence among distributions of the magnitude of extreme events, such as storm intensity, or among distributions of impacts, such as dollars of damage from a storm event. If X and Y are leptokurtic, then extreme events could be quite large for either event, but high-loss draws are not necessarily more likely to occur simultaneously. If X and Y are tail dependent, they are more likely to take on extreme values together, even if their marginal distributions are thin-tailed.

Note that UTD does not depend on the marginal distributions of X and Y . Thus, if we apply any 1-to-1 transformation to X , say $X^* = X^3$, then $UTD(X^*, Y) = UTD(X, Y)$. UTD has no simple relation to the standard Pearson correlation coefficient. For example, if (X, Y) are bivariate normal, with correlation ρ strictly between -1 and 1, the $UTD(X, Y) = 0$ (McNiel, Frey et al. 2005). If $(X, Y)_i; i = 1, \dots, \infty$ are bivariate normal with correlation ρ_i , and if $\lim \rho_i \rightarrow 1$ as $i \rightarrow \infty$, then:

$$(9) \quad UTD(\lim_{i \rightarrow \infty} (X_i, Y_i)) = 1 \quad \neq \quad \lim_{i \rightarrow \infty} UTD(X_i, Y_i) = 0.$$

Tail dependence is related to the correlation of extreme event occurrences. For any two events A and B , the indicator functions $1_A, 1_B$, are functions which take the value 1 if A or B occurs respectively, and zero otherwise. The Pearson correlation of the indicator functions is:

$$(10) \quad \rho(1_A, 1_B) = \frac{P(A \text{ and } B) - P(A)P(B)}{[P(A)(1-P(A))P(B)(1-P(B))]^{1/2}}.$$

Setting $A = \{X \text{ is above its } r\text{-percentile}\}$ and $B = \{Y \text{ is above its } r\text{-percentile}\}$, then $P(A) = (1-r)$ and $P(B) = (1-r)$. After some manipulations:

$$(11) \quad \rho(1_A, 1_B) = \frac{P(A \text{ and } B)}{r(1-r)} - \frac{1-r}{r} \rightarrow UTD(1_A, 1_B) \text{ as } r \rightarrow 1.$$

The joint distribution of the percentiles of two random variables is called a “*copula*”, and tail dependence is a property of the copula (for more information on copulae, see: Genest and MacKay 1986; Nelson 1999; Embrechts 2007). Copulae are useful tools for studying multivariate distributions, as they allow us to separate the representation of dependence from the representation of the univariate marginal distributions. Different marginal distributions can be combined in different dependence structures by choosing different copulae. The fact that tail dependence is a property of the copula immediately shows, as stated earlier, that there is no general relation between fat tails and tail dependence. We could transform the marginal distributions to thick or thin tailed distributions as we like without affecting the tail dependence. These are separate issues. Current research focuses on the relation between tail dependence and multivariate extreme value copulae (Chavez-Demoulin, Embrechts et al. 2005; Joe, Li et al. 2008).

Just as correlations between sums grow with aggregation, under certain conditions, tail dependence can also grow. If the random variables are thought to be insurance policies, this ballooning of tail dependence will again put limits on diversification. As one simple example, consider a basic model of dependence in which a set of random variables X_1, \dots, X_n are symmetrically correlated with a “latent variable.” The degree of correlation between the variables will then depend on the chosen copula. If a tail independent copula is chosen, such as the normal copula, aggregation will not increase tail dependence. If a weakly tail dependent copula is chosen, however, then the tail dependence can balloon upon aggregation.

One version of this is called the “ L_p symmetric process,” which is widely used in reservoir management, maintenance optimization, and deterioration modeling (van Noortwijk 1996). In this case, the latent variable is the scale factor, and the X_i 's are conditionally independent variables characterized by a fixed shape and a scale factor which is uncertain. Given a scale value, the variables are independent, but lack of knowledge of the scale factor induces a global correlation between the X_i 's.

A simple case of this model is treated in the appendix. The X_i 's are conditionally independent exponential variables, given the failure rate λ , whose distribution is in the Gamma family with shape factor ν and scale factor a . In this case, the unconditional distribution of each X_i is the Pareto distribution. Any two of the X_i 's have Pearson correlation $1/\nu$ and have upper tail dependence given by:

$$(12) \quad UTD(x_i, x_j) = \frac{(\frac{1}{2})^{\nu+1} [1 + \frac{1}{2} + \frac{\nu}{2} + 1/4(\nu-1)]}{1+\nu}; \nu > 1.$$

If we consider distinct sums of N such variables, the tail dependence expression becomes complicated, but grows with N . Moreover, the lower tail dependence tends toward zero, and the correlation in N -sums conditional on the sums being less than their means, grows very slowly. The thickness of the tails from aggregation does not change appreciably (see appendix).

This model is interesting because it is widely applied and it is one of the few in which we can actually compute all relevant quantities. We can see tail dependence emerging from summing familiar random variables. In general, computations of sums of tail dependent variables are intractable; however simulation is rather easy.

We choose the correlation $\rho(X_i, \text{Latent}) = 0.1$; the correlation between X_i and X_j will depend on the copula chosen to realize this correlation, but will be on the order of 0.01. Figure 2 shows four percentile scatter plots using a Gumble copula having weak upper tail dependence. Figure 2a is simply between X_1 and X_2 , and the correlation 0.02 is imperceptible. 2b shows the scatter plot of distinct sums of 10 variables. The correlation between them of 0.14 is scarcely visible, but we do see some darkening of the upper right corner. In Figure 2c and 2d we see the scatter plots of sums of 20 and 40 variables respectively. Now the upper tail dependence becomes quite evident. These plots suggest that the way to detect micro-correlations and tail dependence is to look at disjunct sums, an idea we will exploit in studying the St. Louis County, Missouri and Florida flood insurance claims data in the next section.

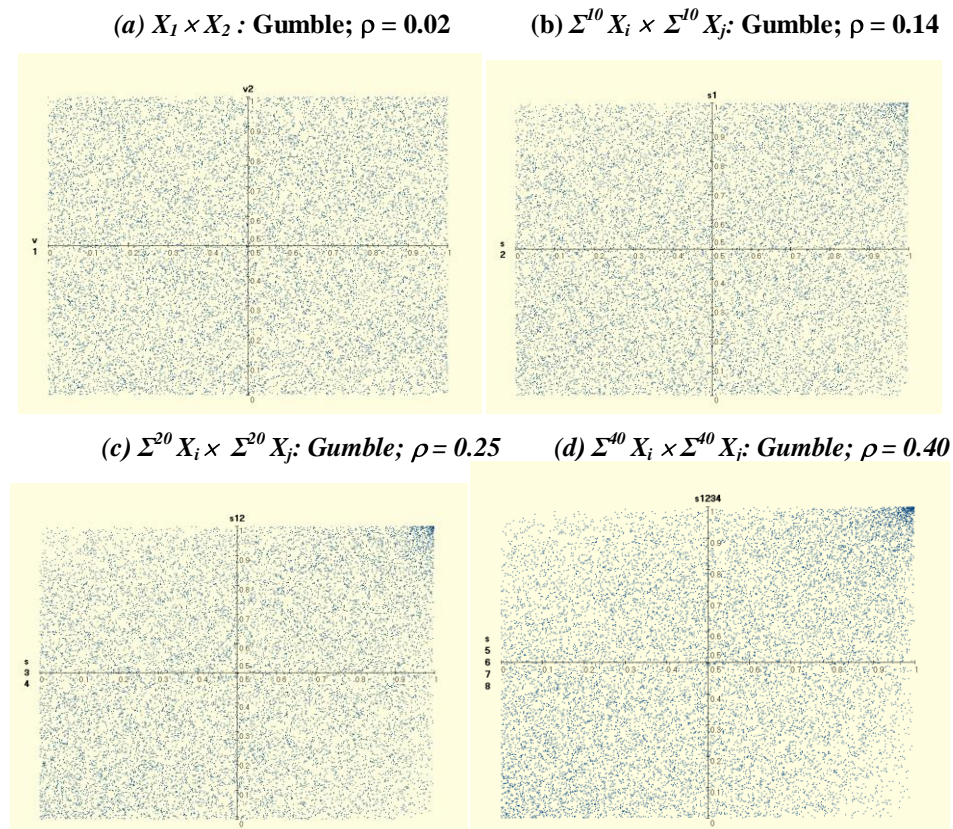


Figure 2: Tail dependence, Gumble copula

To illustrate how the aggregate tail dependence depends on the copula, Figure 3 shows the same model as in Figure 2, but with the elliptical copula⁷ in 3a and the Normal copula in 3b. In both of these, there is no discernable tail dependence.

(a) $\Sigma^{40} X_i \times \Sigma^{40} X_j$: Elliptical; $\rho = 0.40$ (b) $\Sigma^{40} X_i \times \Sigma^{40} X_j$: Normal; $\rho = 0.31$

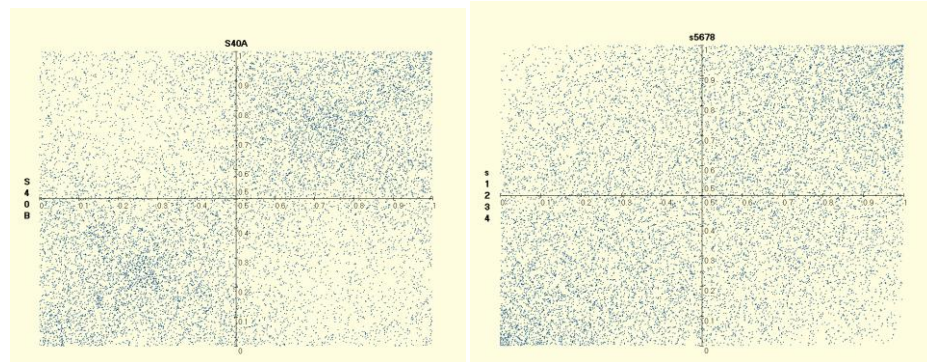


Figure 3: Elliptical and Normal copulae, no tail dependence

The presence of upper tail dependence is very important for two reasons; first, it warns us that our “sorrows come in battalions,” and second it tells us that in spite of ballooning correlation, the lower values may remain relatively uncorrelated. Policy implications of this for insurance are discussed in section six.

5. Tails and Dependencies: Flood Insurance Claims in Missouri and Florida

Flood insurance is available in the U.S. through the National Flood Insurance Program (NFIP), run by the Federal Emergency Management Agency (FEMA). The NFIP was enacted in 1968, partly in response to the concern by private insurers that flood peril was uninsurable. As a first exploration of micro-correlations, fat tails, and tail dependence in disaster insurance claims, we look here at recorded damages in flood claims in St. Louis County, Missouri between 1991 and 1994 and at recorded damages of NFIP claims aggregated monthly for the entire state of Florida between 1978 and 2006.⁸ All values have been adjusted for inflation.

We start with the St. Louis data. There are 2,962 non-zero claims in our data for damage to both buildings and contents. We first look at the distribution of all 2,962 claims. As discussed in section 3.1, a useful way to examine whether a distribution is thick-tailed is to look at the mean excess plot. This is shown in Figure 4, both without any aggregation of variables and with variables randomly aggregated into groups of 20. The curves are not strictly linear but are

⁷ The elliptical copula concentrates on an elliptical surface to induce the required correlation, see Kurowicka and Cooke (2006). It is of interest mainly because it is analytically tractable, is related to the normal copula, yet has markedly different properties.

⁸ Thanks to Tim Scoville, Ed Pasterick, and Erwann Michel-Kerjan for providing us with the data.

certainly not constant, indicating that the claims follow a fat-tailed distribution. The eyeball slope in the left plot is 1.12, while that in the right it is 0.69. This would correspond to $\nu = 1.89$ and $\nu = 2.45$, although the mean excess is not convincingly linear in either case. The slopes are not consistent with the L_p models in the appendix, as the thickness of the tail of such models remains relatively constant under aggregation.

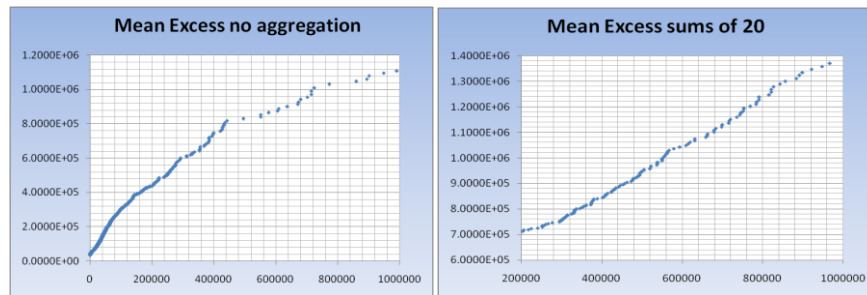


Figure 4: Mean excess, with (right) and without (left) aggregation

To study tail dependence, we must organize the data into random variables which may be aggregated. We consider daily claims across 17 municipalities in St. Louis County that have at least 20 days in which claims were filed. In total there are 207 days in which claims were filed in at least one of these 17 municipalities. The data is thus a 207×17 matrix, whose columns correspond to random variables and whose rows correspond to realizations. In configuring the data in this way, we are conditionalizing the joint distribution of municipality-damage on days with at least one damage event to one or more municipalities. It is this conditional distribution which we study. Evidently, this analysis ignores any temporal structure in the data; it is as if the days were scrambled.

The geographic proximity of these municipalities creates a positive dependence between their flood claims. No insurer would consider aggregating flood policies in municipalities that share a river system as diversification, but looking at the dependence between these municipalities allows a first test of methods for examining dependence and an initial consideration of the way tail dependence can increase when claims are aggregated. We randomly sample aggregations of up to 8 cities, compute the correlations of these aggregations, repeat this 500 times, and then average the resulting correlations for each aggregation level. The results are in Table 1.

500 correlations of aggregations out of 17 cities								
Aggregation size	1	2	3	4	5	6	7	8
Average of 500 correlations	.161	.222	.245	.260	.263	.269	.273	.284
Standard deviation of 500 correlations	.207	.167	.136	.135	.121	.113	.110	.106

Table 1: St. Louis, average correlations for aggregations, 500 iterations

A value 0.161 measured with standard deviation 0.207 and following a normal distribution would not be significantly different from zero;⁹ however, that the correlations should monotonically increase in aggregation size is highly significant. If the damages of cities were independent, then the aggregations would also be independent, and the averages in Table 1 should fluctuate around zero. This is clearly not the case. There is also evidence of increasing tail dependence with aggregation. Figure 5 shows percentile scatter plots of two aggregations of 4 and two aggregations of 8 municipalities. Although there are many zero's in these plots, the evidence for tail dependence is unmistakable.

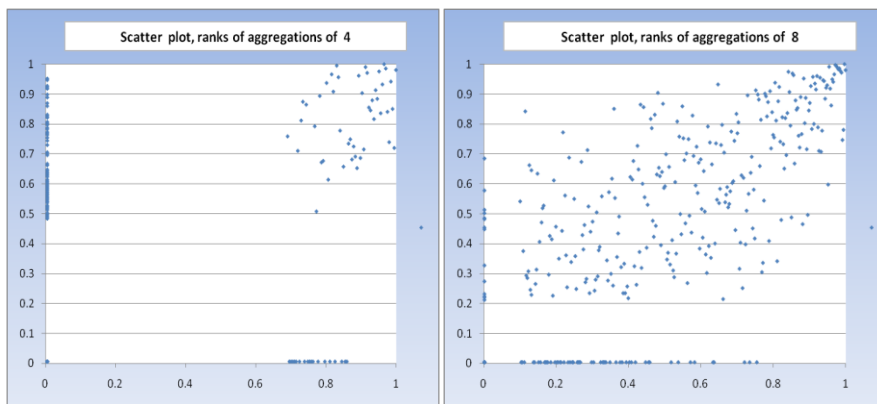


Figure 5: Tail dependence, St. Louis cities

We may draw aggregations of size 1 up to 8 and compute the probability that one such aggregation is above its 90 percentile, given that the other is above its 90 percentile, denoted UTD(90). The average UDT(90) over 500 iterations is shown in Table 2. Again, if there were no tail dependence at the 90th percentile, these numbers should be fluctuating about 0.1, not increasing monotonically.

Aggregation size	1	2	3	4	5	6	7	8
Average UTD(90)	0.229	0.347	0.371	0.398	0.421	0.430	0.435	0.442

Table 2: St. Louis, UTD(90), 500 iterations

Similar results are found when examining the Florida data. We aggregate the Florida claims by month and by county. As counties are aggregated in Florida, the average correlation rises, as seen in Table 3. The tail dependence also increases, as shown in Table 4 and Figure 6. In Figure

⁹ This remark is just indicative; the actual sampling distribution of the average correlation is quite complicated and could only be determined by bootstrapping.

6, the left graph shows a percentile scatter plot of monthly flood damages for two randomly chosen aggregations of 5 Florida counties (the points on the axes are months with no claims filed.) The right picture shows a similar plot, but for aggregations of 30 counties. The increase in tail dependence is striking. Tables 3 and 4 show the same patterns as Tables 1 and 2. The correlation between aggregations increases with size, and UTD(90) also increases.

Aggregation size	1	5	10	15	20	25	30
Average correlation	0.213	0.321	0.401	0.444	0.507	0.551	0.612
Standard deviation of correlations	0.277	0.300	0.286	0.260	0.240	0.216	0.184

Table 3: Florida, correlations of aggregations, 500 iterations

Aggregation size	1	5	10	15	20	25	30
Average UTD(90)	0.183	0.430	0.498	0.546	0.588	0.626	0.654

Table 4: Florida, UTD(90), 500 iterations

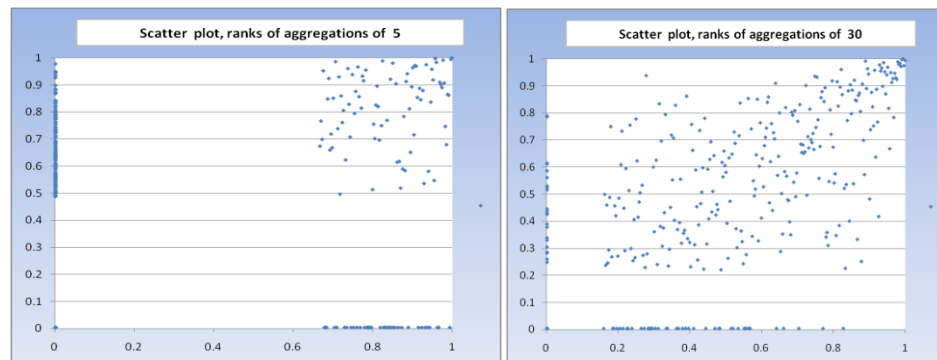


Figure 6: Tail dependence, Florida counties

These informal analyses of the flood damage data in St Louis and Florida show that all three features are present: correlations that balloon with aggregation, fat tails, and tail dependence. Perhaps more importantly, it suggests how we can detect such features, namely by considering average values of random aggregations.

6. Policy Implications

The first thing to note is that more research on these topics is clearly needed. Mathematical tools from extreme value theory, financial risk management, and dependence analysis should be developed and brought to bear on these issues. Further analysis of other large loss data sets could teach us more about micro-correlations, fat tails, as tail dependence, beyond

our initial findings from the St. Louis and Florida data. Larger, more diverse data sets may reveal properties under random aggregation that are not visible otherwise. Hopefully, features brought to light can be aligned with more physical analyses into phase transitions, Super Cats, and the clustering of catastrophes. Based on the mathematical and empirical results, more thought will need to be put into developing robust risk management strategies as the climate changes.

The policy implications from our initial work here are very preliminary and will be elaborated as our research in this area proceeds. Still, while that is ongoing, an initial discussion is warranted. We begin with four issues that stand out for the insurance of natural disaster risk:

(1) *Limits to securitization.* In the presence of micro-correlations, a point is reached beyond which further securitization is unhelpful and can actually hurt us. Strategies for identifying potential micro-correlations are needed, as are approaches for identifying and implementing limits to aggregation. What is the role of private markets, what is the role of government oversight, and what are the rights of the public for disclosure? Until such questions are resolved, the results presented here suggest that caution in securitization would be prudent.

(2) *Conditional indemnity.* If indeed correlation is found to concentrate at high damage levels, it may well be that conditionalizing on small to modest damage levels could define markets in which diversification is viable. That is, in theory, a cap could be identified under which tail dependence is at a minimum and private markets could function. This cap may be akin to the phase transition explored by RMS modelers. A possible role for government could be in covering losses above the cap. Instead of simply assuming the losses, the government could offer potentially subsidized excess-of-loss reinsurance for the higher levels of loss (Cutler and Zeckhauser 1999). This could be a multi-line contract, where losses would have to exceed a trigger in multiple insurance lines (Lescourret and Robert 2006). Such a contract could be similar to the excess-of-loss contracts proposed by Lewis and Murdoch (1996). Catastrophe bonds could also potentially be designed to cover tail dependent risks. For instance, in April 2007, Swiss Re structured a cat bond covering flood risk in the UK that is triggered if there is flooding in at least four of fifty reference locations (Swiss Re 2008). In theory, a cat bond that is triggered by losses in multiple lines of coverage or multiple locations could be designed for tail dependent losses. Research on the modeling of extreme dependence that could guide the pricing of such cat bonds or reinsurance is ongoing.

(3) *Affordability and Equity.* It has been shown that the traditional methods of calculating risk exposure may significantly underestimate risk. As with any realization that exposure is greater than previously thought, insurance companies have three response options. They can: reduce exposure, increase the amount of capital they are holding in reserve, or purchase protection from reinsurers or the financial markets (Kunreuther 1998). Any of these options will drive up insurance prices. If prices rise higher than insureds are willing to pay, then the private (re)insurance market may break down, and a broader socio-political discussion of how to manage catastrophe risk will ensue. Florida provides one example of how a collapse in private insurance markets can be poorly handled if the trade-offs are not fully considered. After a series of hurricanes, Florida denied the rate increases private insurers deemed necessary to write policies in an area at such high risk for hurricanes. The state created a residual market mechanism to write property insurance policies to homeowners when insurance companies dropped out of the market. It has grown to be the largest insurer in the state. Their rates are lower

than what is thought to be “risk-based” and should a major hurricane hit the state, it can assess private insurers to recoup costs, which would be passed on to all those with an insurance policy from companies operating in Florida. A truly disastrous hit could bankrupt the state, absent a federal bailout. There is concern that this arrangement is discouraging mitigation; encouraging development in risky areas; subsidizing not just those who need help affording insurance, but also high-income property owners; and distributing the costs of a catastrophe inequitably (Kunreuther and Michel-Kerjan 2009). When catastrophic losses are possible, private insurance may be unable to effectively operate and the question of how society should then manage this risk and how the costs of a disaster should be distributed needs to be carefully discussed.

The line of research we have initiated here also has implications for climate policy beyond insurance markets. Our work has shown that unless risks are properly accounted for, estimates of the costs of single events or of aggregate damages from climate change could significantly underestimate potential losses. Also, as shown in some of the examples, tail dependence between different loss distributions is sometimes created by human activity, suggesting it can also be broken. This was indicated by the example of installing water and gas pipes that can withstand earthquakes. Identifying areas such as this where risks can be reduced will undoubtedly be difficult and potentially incredibly location specific. Still, the work RMS and others are doing in catastrophe modeling will likely continue to shed light on areas for improved disaster response and adaptation policy. This work will also increase our understanding of how high magnitude events trigger further losses, such as the relation between quarantines and network failure, which may otherwise be neglected.

Appendix: L_p Symmetric Measures

An atomless L_p symmetric measure on \mathbf{R}^n is one whose density at (x_1, \dots, x_n) depends only on the L_p norm $[\sum |x_i|^p]^{1/p}$. Berman (1980) proved that L_p symmetric measures on \mathbf{R}^∞ can be uniquely represented as conditionally independent gamma transforms. For L_1 measures, we have conditionally independent exponentials given the failure rate.

Recall the gamma integral:

$$(13) \quad \int_{x>0} x^{\nu-1} e^{-\alpha x} dx = \Gamma(\nu)/\alpha^\nu; \alpha > 0, \nu > 0; \Gamma(\nu) = (\nu-1)! .$$

and the incomplete gamma integral with integer shape ν (Abramowitz and Stegun 1965):

$$(14) \quad (1/\Gamma(\nu)) \int_{x>r} x^{\nu-1} \alpha^\nu e^{-\alpha x} dx = e^{-\alpha r} (1 + \alpha r + (\alpha r)^2/2! + \dots + (\alpha r)^{\nu-1}/(\nu-1)!); \nu \in \mathbf{N}_+$$

The gamma density with shape ν and scale α is $f(x) = \alpha^\nu x^{\nu-1} e^{-\alpha x} / \Gamma(\nu)$, with mean ν/α and variance ν/α^2 . (X_1, \dots) have a L_1 symmetric distribution with gamma prior if, for any n , the n -dimensional marginal density is given by:

$$(15) \quad p(x_1, \dots, x_n) = \int (\prod \lambda e^{-\lambda x_i}) \lambda^{\nu-1} a^\nu e^{-a\lambda} (1/\Gamma(\nu)) d\lambda.$$

Setting $n = 1$ and integrating over λ , one finds the univariate density and survivor functions

$$(16) \quad p(x) = \nu a^\nu / (a+x)^{\nu+1}; S(x) = (a/(a+x))^\nu$$

which are Pareto thick tailed (leptokurtic) (Harris 1968). Conditional on λ , the variables in (3) are independent exponentials, and the sum of n such variables is a gamma variable with shape n and scale λ . The density of the sum of the n variables in (3) is therefore

$$(17) \quad p(\sum_{i=1..n} X_i = r) = \int (1/\Gamma(n)) \lambda^n r^{n-1} e^{-\lambda r} \lambda^{\nu-1} a^\nu e^{-a\lambda} (1/\Gamma(\nu)) d\lambda \\ = r^{n-1} a^\nu \Gamma(\nu+n) / (\Gamma(n)\Gamma(\nu)(a+r)^{\nu+n}).$$

The sums are slightly less leptokurtic, and their tail behavior does not depend on n .

Multiply (2) by x and integrate first over x , then over λ ; the result is the mean of X . The variance, covariance and product moment correlation may be obtained in the same way, giving:

$$(18) \quad \mu(X) = a/(\nu-1); \quad \sigma^2(X) = a^2\nu / [(\nu-1)^2(\nu-2)]$$

$$(19) \quad \text{COV}(X_1, X_2) = a^2 / [(\nu-1)^2(\nu-2)]; \quad \rho(X_1, X_2) = 1/\nu$$

$$(20) \quad \text{Var}(X_1 + \dots + X_n) = \sigma^2(X)(n + n(n-1)/\nu).$$

Note that the mean exists only if $\nu > 1$, and the variance, and covariance require $\nu > 2$.

Tail Dependence for sums of L_1 measures

Computations of tail dependence for sums of L_1 measures are tractable. For variables X, Y with the same distribution, the (upper) tail dependence of X and Y is:

$$(21) \quad \text{TD}(X, Y) = \lim_{r \rightarrow \infty} P(X > r \cap Y > r) / P(X > r).$$

$X \perp Y$ says that X and Y are independent. If $X \perp Y$ then $\text{TD}(X, Y) = 0$ but not conversely. A bivariate normal with $\rho^2 < 1$ has $\text{TD} = 0$. Tail dependence is invariant under a monotone transformation of X and Y , hence it is a property of the copula joining X and Y . In financial mathematics there is great interest in $\text{TD} > 0$, and hence great interest in modeling dependence with copulae which show positive TD . This note shows how TD can arise from L_1 symmetric variables.

Let $\Sigma(\perp)X_i$ denote sums of independent versions of the X_i and $\Sigma(L_1) X_i$ denote sums of the L_1 versions of the X_i . Using (1) and (4) we have:

$$(22) \quad P(\Sigma_{i=1 \dots N}(\perp) X_i > r) = e^{-\lambda r} (1 + \lambda r + \dots + (\lambda r)^{N-1} / (N-1)!)$$

After some math,

$$(23) \quad P(\Sigma_{i=1 \dots N}(L_1) X_i > r) = K \times \left[\sum_{k=0 \dots N-1} \Gamma(\nu+k) / (k! \Gamma(\nu)) \right] \times (r/(a+r))^k$$

where $K = a^\nu / (\alpha+r)^\nu$. As $r \rightarrow \infty$, the bracketed term goes to:

$$(24) \quad \sum_{k=0..N-1} \Gamma(v+k) / [k! \Gamma(v)] .$$

Note,

$$(25) \quad P(X_1 + \dots + X_N > r \cap X_{N+1} + \dots + X_{2N} > r) =$$

$$\int e^{-\lambda 2r} [(1 + \lambda r + (\lambda r)^2/2! + \dots + (\lambda r)^{N-1}/(N-1)!)]^2 \lambda^{v-1} a^v e^{-a\lambda} (1/\Gamma(v)) d\lambda .$$

$$= (a/(a+2r))^v \sum_{k,j=0..N-1} \Gamma(v+k+j) r^{k+j} / [\Gamma(v) k! j! (a+2r)^{k+j}] .$$

Letting $r \rightarrow \infty$, the sum becomes:

$$(26) \quad \sum_{k,j=0..N-1} (1/2)^{j+k} \Gamma(v+k+j) / [\Gamma(v) k! j!] .$$

The tail dependence of sums of N L_1 variables therefore is

$$(27) \quad \frac{\sum_{k,j=0..N-1} \left(\frac{1}{2}\right)^{j+k} \Gamma(v+k+j) / [\Gamma(v) k! j!]}{\sum_{k=0..N-1} \Gamma(v+k) / [k! \Gamma(v)]} .$$

The following table gives some values, comparing the number n of disjunct variables summed. We see that the tail dependence grows in n , and decreases in the shape factor v .

Upper tail dependence of disjunct sums of n: n =						
Shape	Corr(1,2)	1	3	5	10	50
1		5.00E-01	6.88E-01	7.54E-01	8.24E-01	9.20E-01
2		2.50E-01	4.53E-01	5.49E-01	6.64E-01	8.42E-01
3	3.33E-01	1.25E-01	2.89E-01	3.88E-01	5.23E-01	7.67E-01
4	2.50E-01	6.25E-02	1.80E-01	2.67E-01	4.05E-01	6.94E-01
5	2.00E-01	3.13E-02	1.09E-01	1.80E-01	3.07E-01	6.24E-01
6	1.67E-01	1.56E-02	6.54E-02	1.18E-01	2.30E-01	5.58E-01
7	1.43E-01	7.81E-03	3.86E-02	7.68E-02	1.69E-01	4.97E-01
8	1.25E-01	3.91E-03	2.25E-02	4.90E-02	1.22E-01	4.39E-01
9	1.11E-01	1.95E-03	1.29E-02	3.09E-02	8.72E-02	3.87E-01
10	1.00E-01	9.77E-04	7.39E-03	1.92E-02	6.14E-02	3.38E-01
11	9.09E-02	4.88E-04	4.18E-03	1.18E-02	4.28E-02	2.94E-01
12	8.33E-02	2.44E-04	2.35E-03	7.20E-03	2.94E-02	2.55E-01
13	7.69E-02	1.22E-04	1.31E-03	4.34E-03	2.01E-02	2.19E-01
14	7.14E-02	6.10E-05	7.29E-04	2.60E-03	1.35E-02	1.88E-01
15	6.67E-02	3.05E-05	4.02E-04	1.54E-03	9.04E-03	1.60E-01
16	6.25E-02	1.53E-05	2.21E-04	9.11E-04	5.99E-03	1.35E-01
17	5.88E-02	7.63E-06	1.21E-04	5.34E-04	3.93E-03	1.14E-01
18	5.56E-02	3.81E-06	6.60E-05	3.11E-04	2.56E-03	9.57E-02
19	5.26E-02	1.91E-06	3.59E-05	1.80E-04	1.66E-03	7.98E-02
20	5.00E-02	9.54E-07	1.94E-05	1.04E-04	1.07E-03	6.63E-02

Table 5: Upper tail dependence

The three figures following show rank scatter plots for sums of L_1 measures with shape $(\nu) = 3$. The first shows two variables, the second two sums of 10 variables, and the third shows two sums of 50 variables.

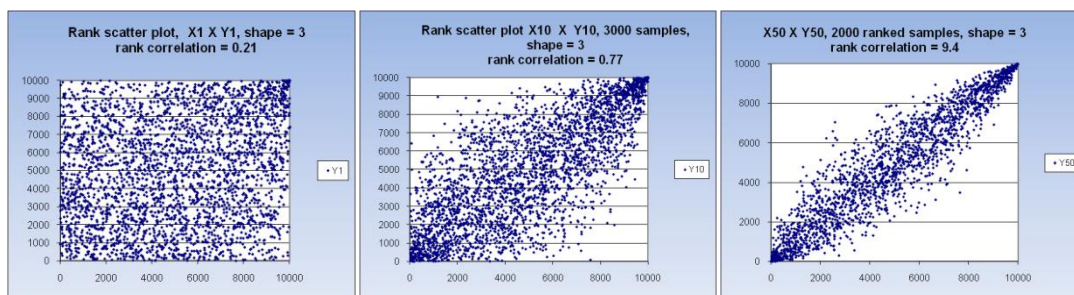


Figure 7: Scatter plots of sums with indicated correlation

Lower Tail Dependence

We may suspect that as the upper tail dependence gets stronger, the lower tail dependence gets weaker. The formulas for calculating this are complex and the limiting formula cannot be derived as easily as for upper tail dependence. Further, the calculations for small values of r with large values of N , encounter numerical problems. The trend, however, can be seen in the table below.

PROB($Z_1, Z_2 < r$) / Prob($Z_1 < r$)				
$Z_i = \text{sum of } n; a=3, v=3$				
$r = \text{mean} * \text{fraction}$:				
n	0.5	0.25	0.1	0.01
1	0.557984	0.36059	0.173613	0.019704031
4	0.569028	0.273852	0.047931	2.65813E-05
8	0.628236	0.305849	0.036901	3.31393E-06

Table 6: Lower tail dependence

The fact that correlation is concentrated in the upper tail means that by conditioning on lower values of each variable, the dependence can be restricted. Such lower quadrant conditioning is comparable to liability indemnity of insurance policies.

References

- Abramowitz, M. and I. A. Stegun, Eds. (1965). Handbook of Mathematical Functions. Mineola, NY, Dover Publications.
- Berman, S. M. (1980). "Stationarity, Isotropy and Sphericity in l_p ." Probability Theory and Related Fields **54**(1): 21-23.
- Charpentier, A. (2008). "Isurability of Climate Risks." The Geneva Papers **33**: 91-109.
- Chavez-Demoulin, V., P. Embrechts and J. Nešlehová (2005). Quantitative Models for Operational Risk: Extremes, Dependence and Aggregation. Implementing an AMA for Operation Risk. Federal Reserve Bank of Boston.
- Cutler, D. M. and R. J. Zeckhauser (1999). Reinsurance for Catastrophes and Cataclysms. The Financing of Catastrophe Risk. K. A. Froot. Chicago, University of Chicago Press: 233-269.
- De Bono, A., G. Giuliani, S. Kluser and P. Peduzzi (2004). Environmental Alert Bulletin: Impacts of Summer 2003 Heat Wave in Europe. Châtelaine, Switzerland, United Nations Environment Programme, Global Resource Information Database (GRID) - Europe
- Embrechts, P. (2007). Copulas: A Personal View. Zurich, Switzerland, ETH Zurich.
- Embrechts, P., D. D. Lambrigger and M. Wüthrich (2008). Multivariate Extremes and the Aggregation of Dependent Risks: Examples and Counter-Examples. Zurich, Switzerland, ETH Zurich, Department of Mathematics.
- Evan, A. T., J. Dunion, J. A. Foley, A. K. Heidinger and C. S. Velden (2006). "New Evidence for a Relationship Between Atlantic Tropical Cyclone Activity and African Dust Outbreaks." Geophysical Research Letters **33**(L19813): doi:10.1029/2006GL026408.
- Froot, K. A. (2001). "The Market for Catastrophe Risk: A Clinical Examination." Journal of Financial Economics **60**: 529-571.
- Froot, K. A. (2008). "The Intermediation of Financial Risks: Evolution in the Catastrophe Reinsurance Market." Risk Management and Insurance Review **11**(2): 281-294.
- Genest, C. and J. MacKay (1986). "The Joy of Copulas: Bivariate Distributions with Uniform Marginals." The American Statistician **40**(4): 280-283.
- Gray, W., M. (1990). "Strong Association Between West African Rainfall and U.S. Landfall of Intense Hurricanes." Science **249**: 1251-1256.
- Grossi, P., H. Kunreuther and D. Windeler (2005). An Introduction to Catastrophe Models and Insurance. Catastrophe Modeling: A New Approach to Managing Risk. P. Grossi and H. Kunreuther. New York, NY, Springer: 23-42.
- Hallegatte, S., A. Boissonnade, M.-E. Schlumberger and R. Muir-Wood (2008). "Demand Surge and Worker Migrations in Disaster Aftermaths: Application to Florida in 2004 and 2005."
- Harris, C. M. (1968). "The Pareto Distribution as a Queue Service Discipline." Operations Research **16**(307-316).

- Ibragimov, R. and J. Walden (2007). "The Limits of Diversification when Losses May be Large." Journal of Banking & Finance **31**: 2551-2569.
- Joe, H., H. Li and A. K. Nikoloulopoulos (2008). Tail Dependence Functions and Vine Copulas. Pullman, WA, Washington State University, Department of Mathematics.
- Kuhn, G., S. Khan, A. R. Ganguly and M. L. Branstetter (2007). "Geospatial-Temporal Dependence Among Weekly Precipitation Extremes with Applications to Observations and Climate Model Simulations in South America." Advances in Water Resources **30**: 2401-2423.
- Kunreuther, H. (1998). Insurability Conditions and the Supply of Coverage. Paying the Price: The Status and Role of Insurance Against Natural Disasters in the United States. H. Kunreuther and R. J. Roth. Washington, D.C., Joseph Henry Press.
- Kunreuther, H. and R. Hogarth (1992). How Does Ambiguity Affect Insurance Decisions? Contributions to Insurance Economics. G. Dionne. Dordrecht, The Netherlands, Kluwer Academic Publishers.
- Kunreuther, H. C. and E. Michel-Kerjan (2007). "Climate Change, Insurability of Large-Scale Risks and the Emerging Liability Challenge." Penn Law Review **155**(6): 1795-1842.
- Kurowicka, D. and R. M. Cooke (2006). Uncertainty Analysis with High Dimensional Dependence Modeling. New York, New York, Wiley.
- Lane, M. and O. Mahul (2008). Catastrophe Risk Pricing: An Empirical Analysis. Policy Research Working Paper 4765. Washington, D.C., The World Bank, Global Capital Market Non Banking Financial Institutions Division, Finance and Private Sector Development Vice Presidency.
- Lescouret, L. and C. Y. Robert (2006). "Extreme Dependence of Multivariate Catastrophic Losses." Scandinavian Actuarial Journal **4**: 203-225.
- Lewis, C. M. and K. C. Murdock (1996). "The Role of Government Contracts in Discretionary Reinsurance Markets for Natural Disasters." The Journal of Risk and Insurance **63**(4): 567-597.
- Malamud, B. D. and D. L. Turcotte (2006). "The Applicability of Power-Law Frequency Statistics to Floods." Journal of Hydrology **322**: 168-180.
- McNiel, A. J., R. Frey and P. Embrechts (2005). Quantitative Risk Management: Concepts, Techniques, and Tools. Princeton, NJ, Princeton University Press.
- Mills, E. (2005). "Insurance in a Climate of Change." Science **309**(August 12): 1040-1044.
- Milly, P. C. D., J. Betancourt, M. Falkenmark, R. M. Hirsch, Z. W. Kundzewicz, D. P. Lettenmaier and R. J. Stouffer (2008). "Stationarity is Dead: Whither Water Management?" Science **319**(February 1): 573-574.
- Muir-Wood, R. (2004). "Top 10 Risks: Paradise Painted Black." Risk & Insurance **April 15**.
- Muir-Wood, R. and P. Grossi (2008). The Catastrophe Modeling Response to Hurricane Katrina. Climate Extremes and Society. H. F. Diaz and R. J. Murnane. Cambridge, UK, Cambridge University Press.

- Nelson, R. (1999). An Introduction to Copulas. New York, Springer.
- Riker, W. (2004). "Using Models for Effective Risk Management." Exposure Summer.
- RMS (2005). Hurricane Katrina: Profile of a Super Cat: Lessons and Implications for Catastrophe Risk Management. Newark, California, Risk Management Solutions.
- RMS (2006). Press Release: RMS Study Estimates \$50-\$80 Billion of Insured Losses From a Repeat of the 1906 San Francisco Earthquake and Fire; Insured Losses Expected to Amplify Due to 'Super Cat' Effects. Newark, California, Risk Management Solutions.
- RMS (2008). Press Release: Advanced RMS Simulation Platform Allows Re/Insurers to Model "Clustering" of Weather Events. Newark, California, Risk Management Solutions.
- Schär, C. and G. Jendritzky (2004). "Hot News From Summer 2003." Nature **432**(December 2): 559-560.
- Schär, C., P. L. Vidale, D. Lüthi, C. Frei, C. Häberli, M. A. Liniger and C. Appenzellar (2004). "The Role of Increasing Temperature Variability in European Summer Heatwaves." Nature **427**(January 22): 332-336.
- Sheremet, O. and A. Lucas (2008). Global Loss Diversification in the Insurance Sector. Tinbergen Institute Discussion Paper. Amsterdam, The Netherlands, Tinbergen Institute.
- Slijkerman, J. F. (2006). Insurance Sector Risk. Tinbergen Institute Discussion Paper. Amsterdam, The Netherlands, Tinbergen Institute.
- Stedman, J. R. (2004). "The Predicted Number of Air Pollution Related Deaths in the UK During the August 2003 Heatwave " Atmospheric Environment **3**(8): 1087-1090
- Steinberg, T. (2000). Acts of God : the Unnatural History of Natural Disaster in America. New York, Oxford University Press.
- Swiss Re (2008). Disaster Risk Financing: Reducing the Burden on Public Budgets. Swiss Re Focus Report. Zurich, Switzerland, Swiss Re.
- Tol, R. S. J. (2002). "Estimates of the Damage Costs of Climate Change." Environmental Resource Economics **21**: 47-73.
- U.S. Climate Change Science Program (2008). Weather and Climate Extremes in a Changing Climate. Washington, D.C., U.S. Climate Change Science Program.
- van Noortwijk, J. M. (1996). Optimal Maintenance Decisions for Hydraulic Structures. Dept. of Mathematics. Delft, The Netherlands, Delft University of Technology. **PhD**.
- van Oorschot, M. M. P., B. C. P. Kraan, R. M. M. van den Brink, P. H. M. Janssen and R. M. Cooke (2003). Uncertainty Analysis for NOx Emissions from Dutch Passenger Cars in 1998, Applying Structured Expert Elicitation and Distinguishing Different Types of Uncertainty; RIVM Report 550002004/2003. Bilthoven, The Netherlands
- Weitzman, M. (2007). "A Review of The Stern Review on the Economics of Climate Change." Journal of Economic Literature **45**(3): 703-724.
- Weitzman, M. (2008). On Modeling and Interpreting the Economics of Catastrophic Climate Change, forthcoming in the Review of Economics and Statistics.

- Wharton Risk Management and Decision Processes Center (2008). *Managing Large-Scale Risks in a New Era of Catastrophes: Insuring, Mitigating and Financing Recovery from Natural Disasters in the United States*. Philadelphia, PA, Wharton Risk Management and Decision Processes Center, Georgia State University, and Insurance Information Institute.
- Woo, G. (1999). *The Mathematics of Natural Catastrophes*. London, Imperial College Press.
- Zeckhauser, R. (1996). "Insurance and Catastrophes." *The Geneva Papers on Risk and Insurance Theory* 20: 157-175.
- Zimmerli, P. (2003). *Natural Catastrophes and Reinsurance*. Zurich, Switzerland, Swiss Re.