



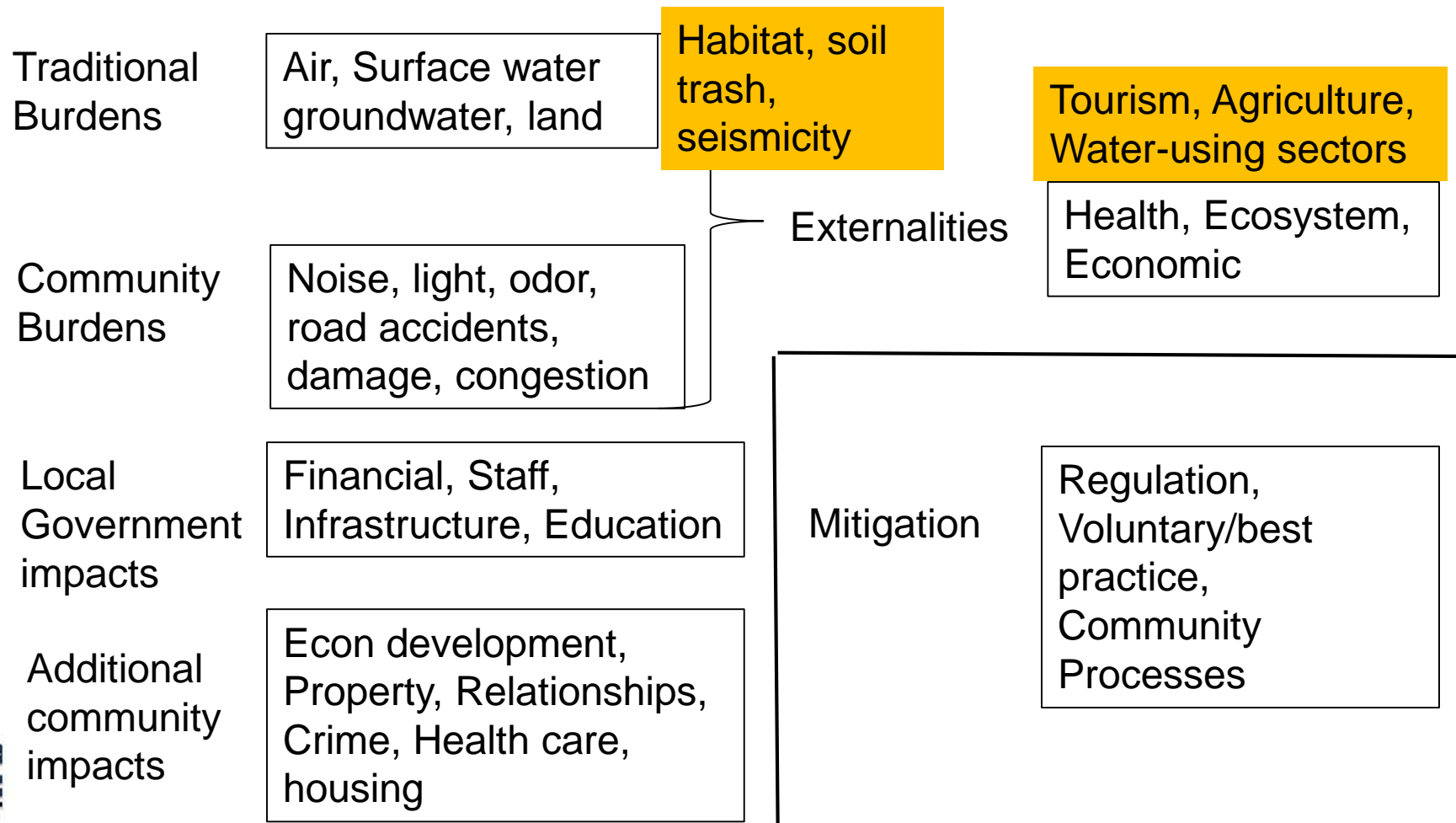
How Oil and Gas Development Affects Local Governments and Communities

Alan Krupnick

Co-Director of Center for Energy and Climate Economics

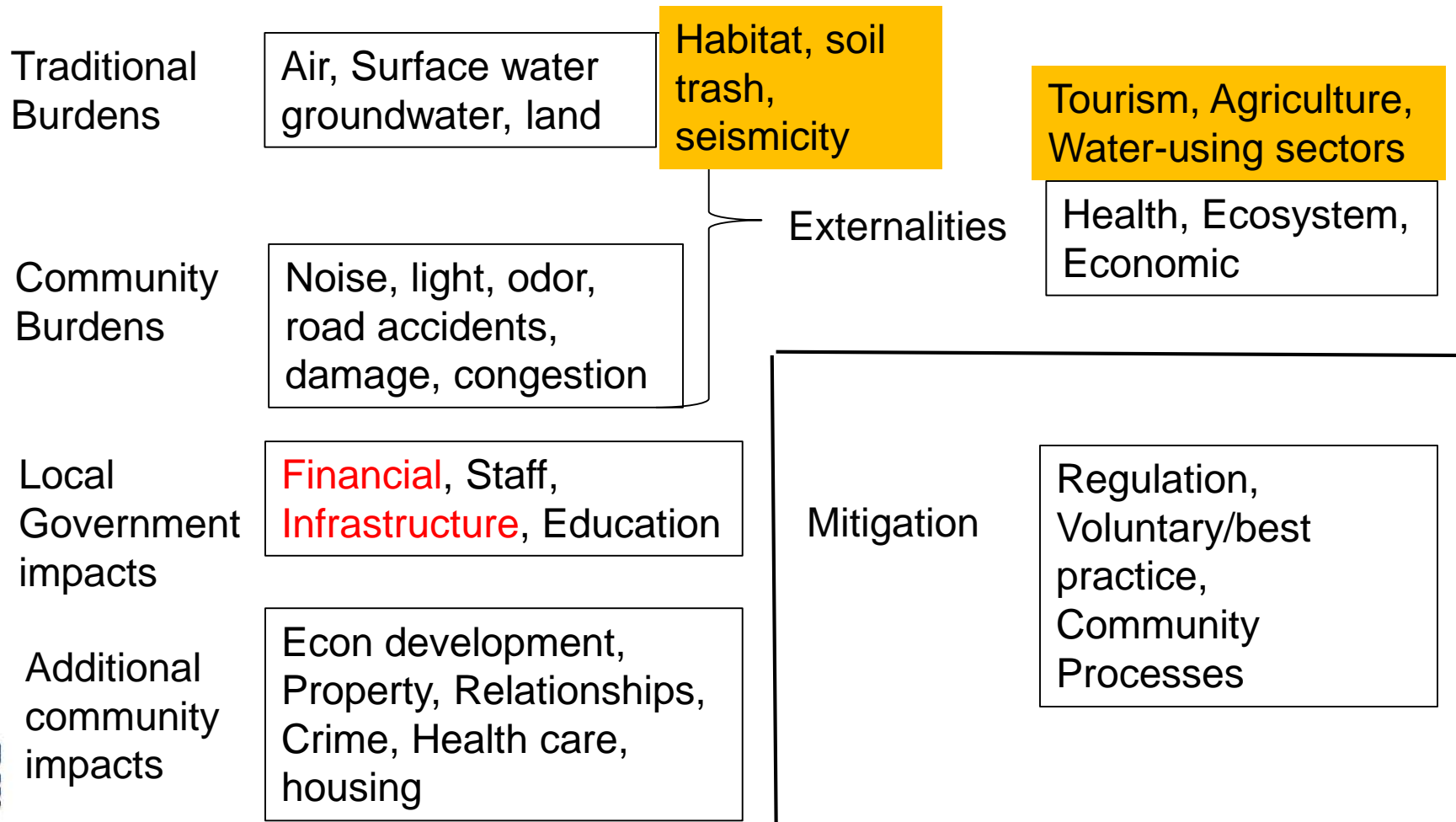
Community Impacts and Interactions Initiative

SGD Stages: Initial Assessment → Leasing/Permitting → Exploration → Development → Production → Plugging and Abandonment



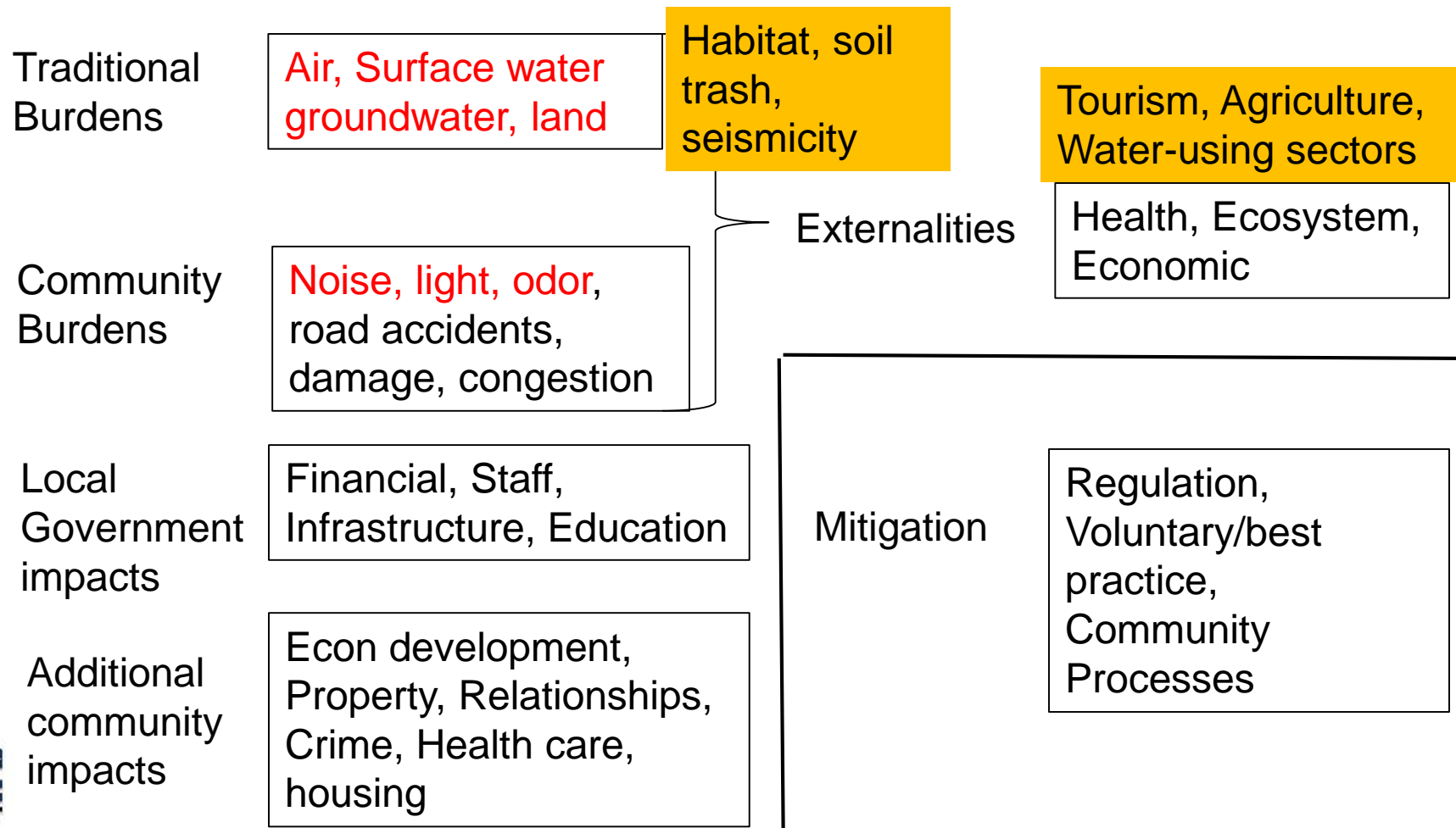
Fiscal Impacts (Newell and Raimi)

SGD Stages: Initial Assessment → Leasing/Permitting → Exploration → Development → Production → Plugging and Abandonment



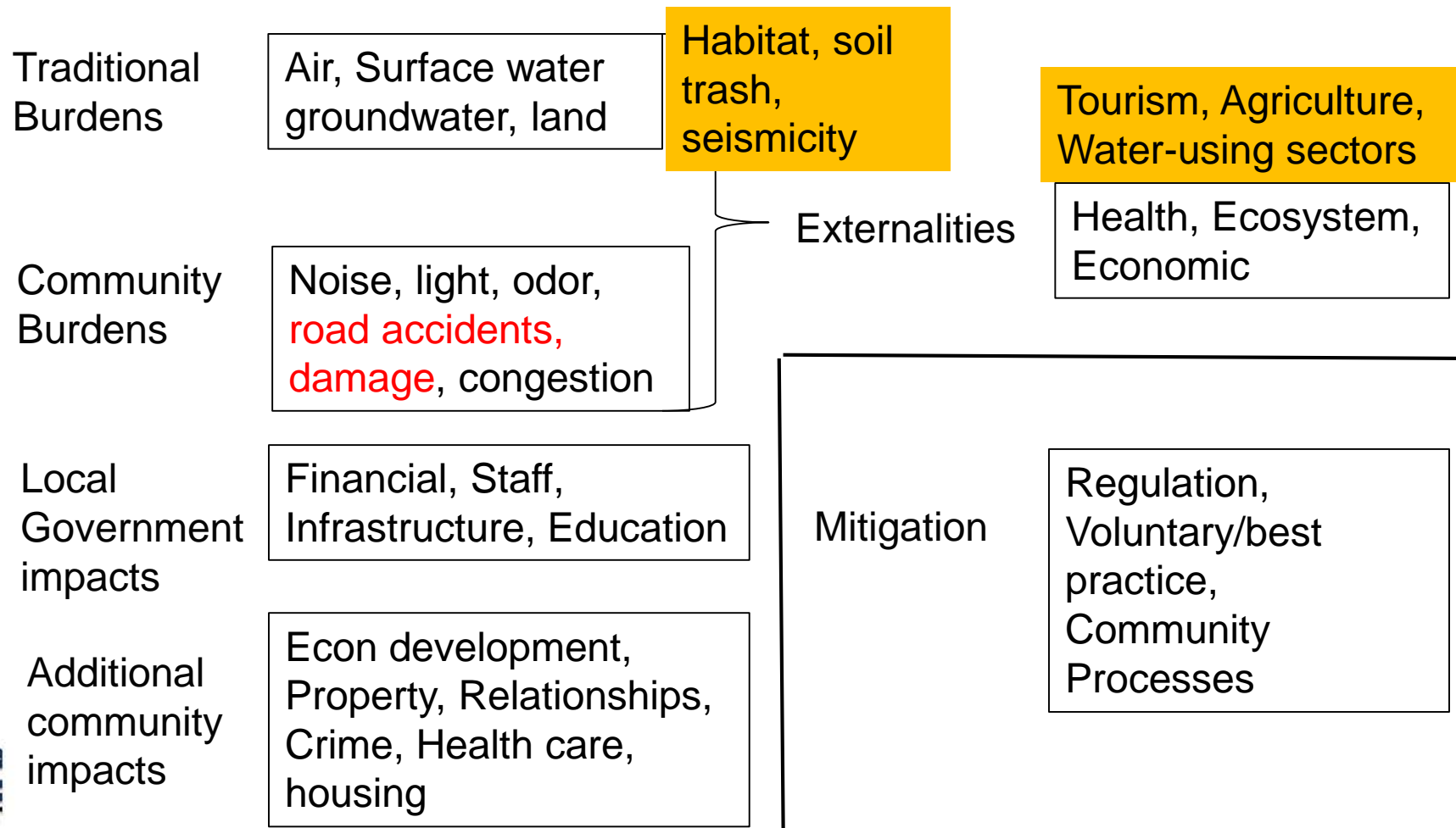
Leasing

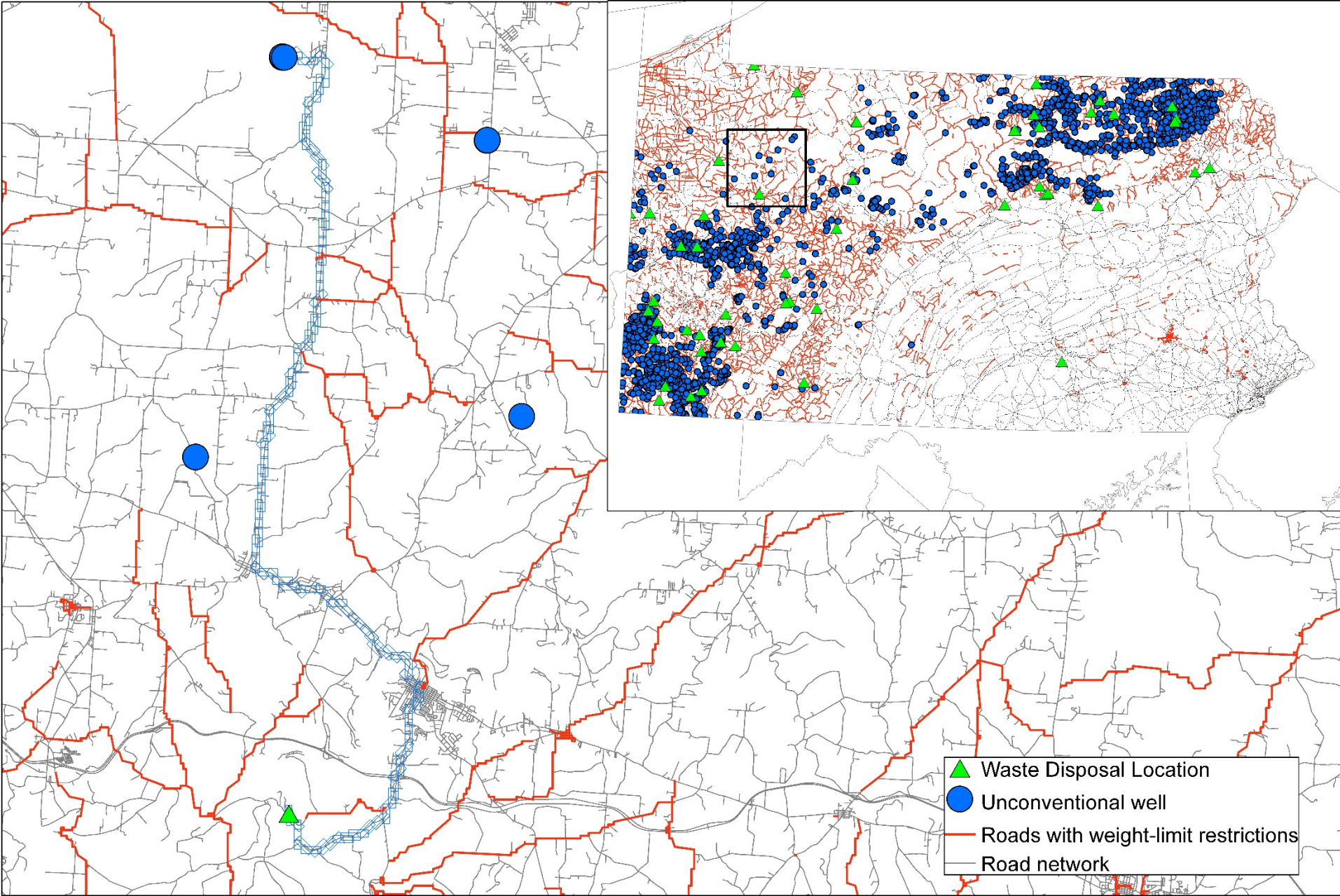
SGD Stages: Initial Assessment → **Leasing/Permitting** → Exploration → Development → Production → Plugging and Abandonment



Road Damage and Accidents

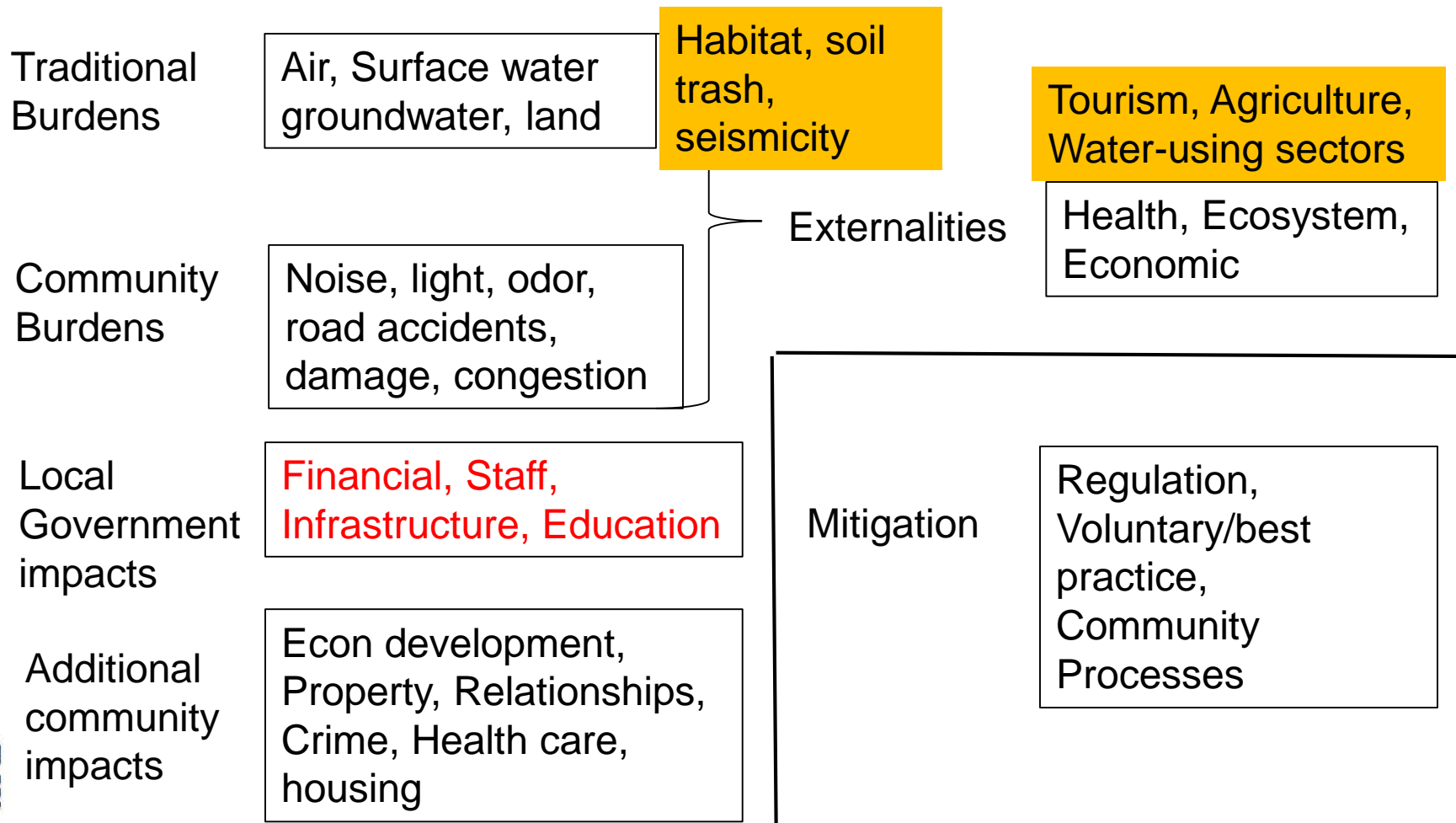
SGD Stages: Initial Assessment → Leasing/Permitting → Exploration → **Development** → Production → Plugging and Abandonment





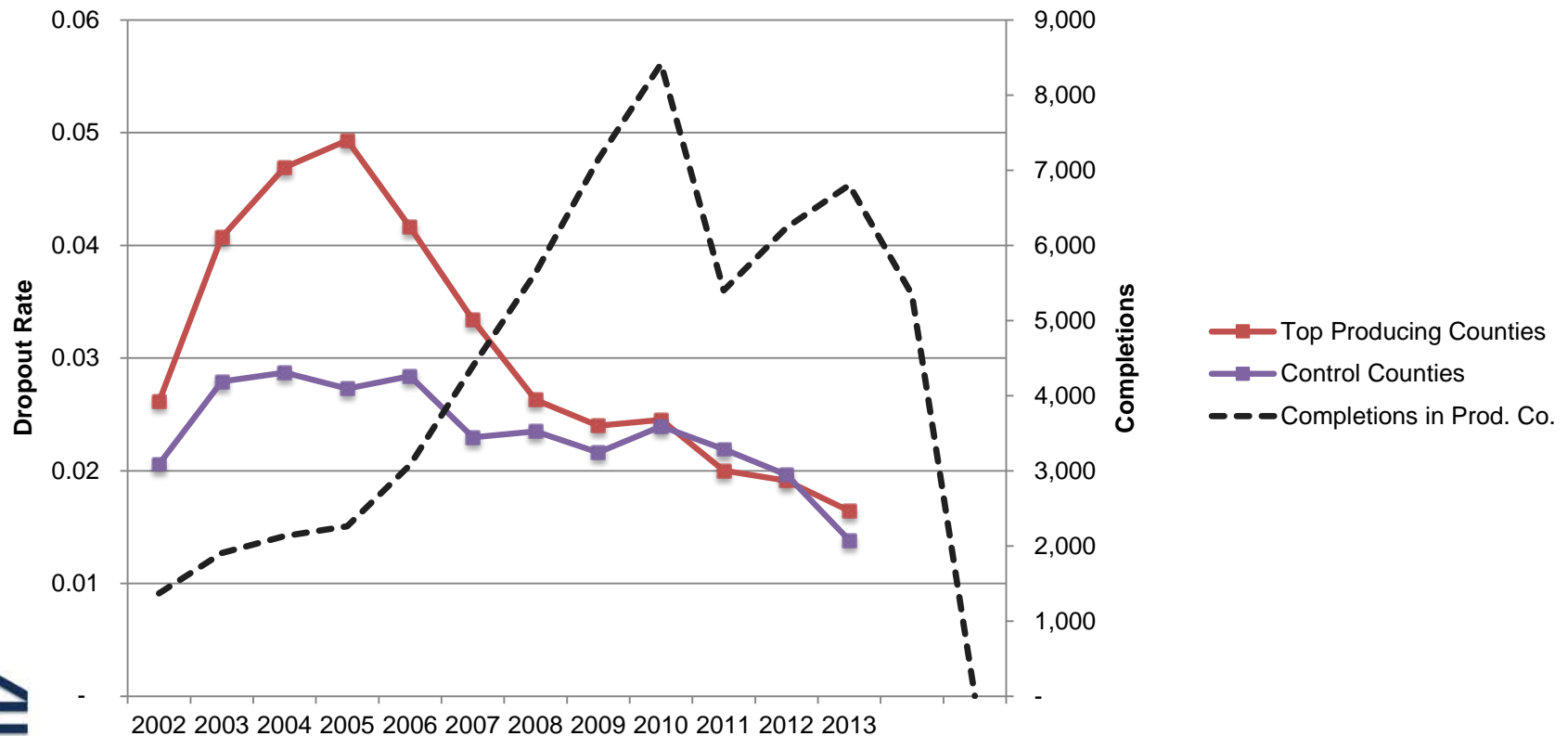
Education

SGD Stages: Initial Assessment → Leasing/Permitting → Exploration → Development → Production → Plugging and Abandonment



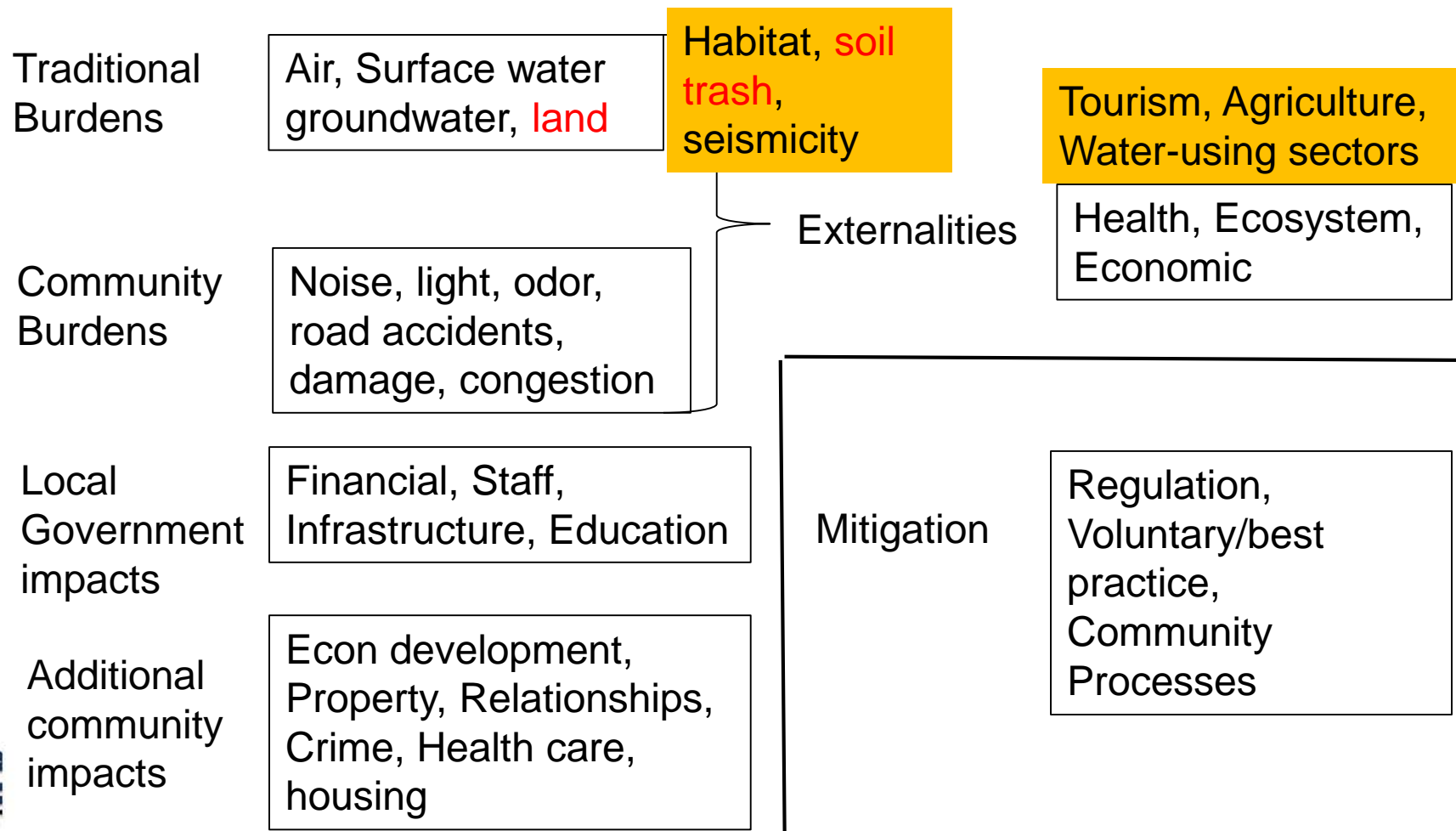
Sample State - Colorado

Dropout Rate – A short-lived spike occurred in top producing counties, but ultimately disappeared.



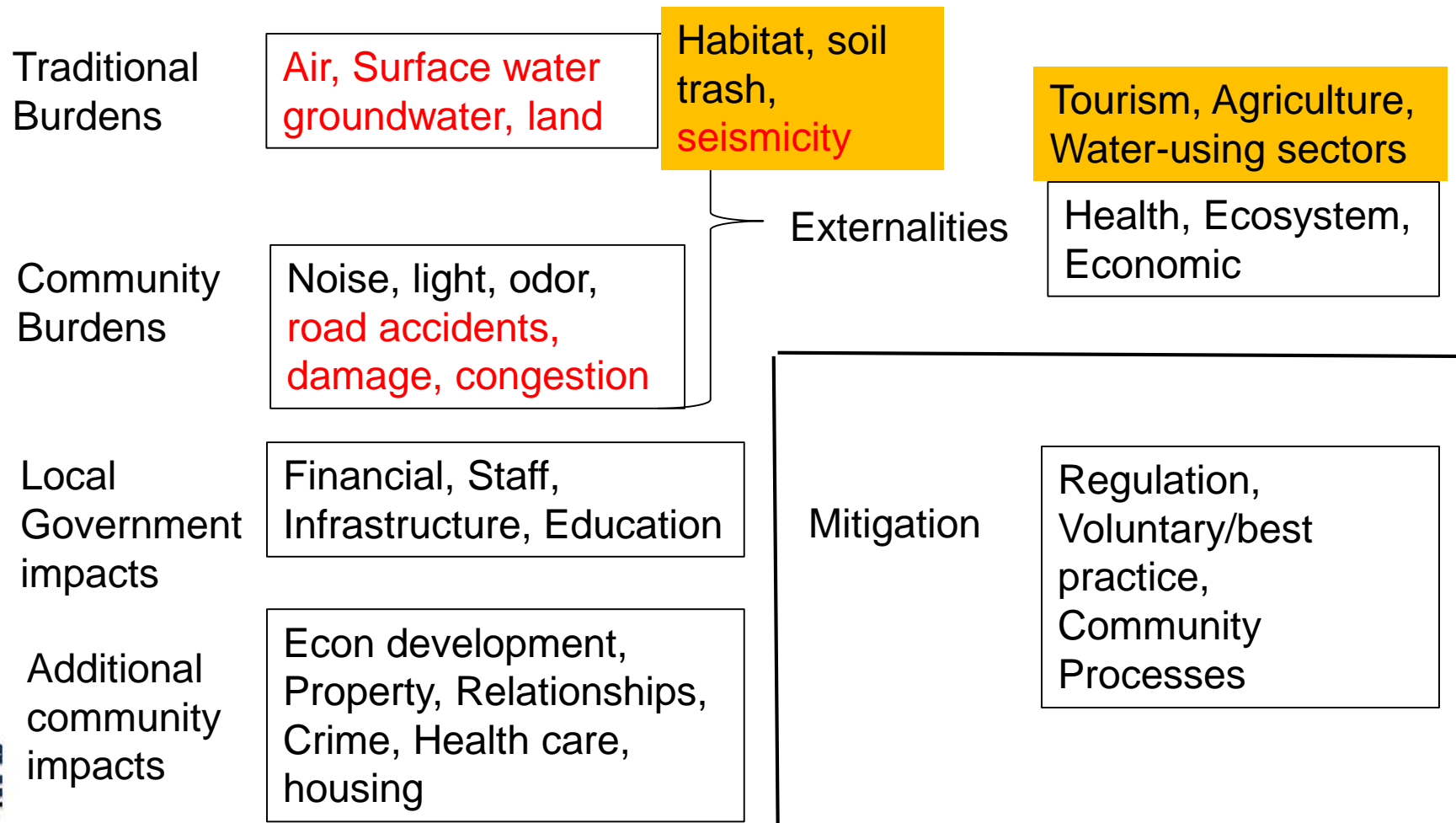
Solid Waste

SGD Stages: Initial Assessment → Leasing/Permitting → Exploration → **Development** → Production → Plugging and Abandonment



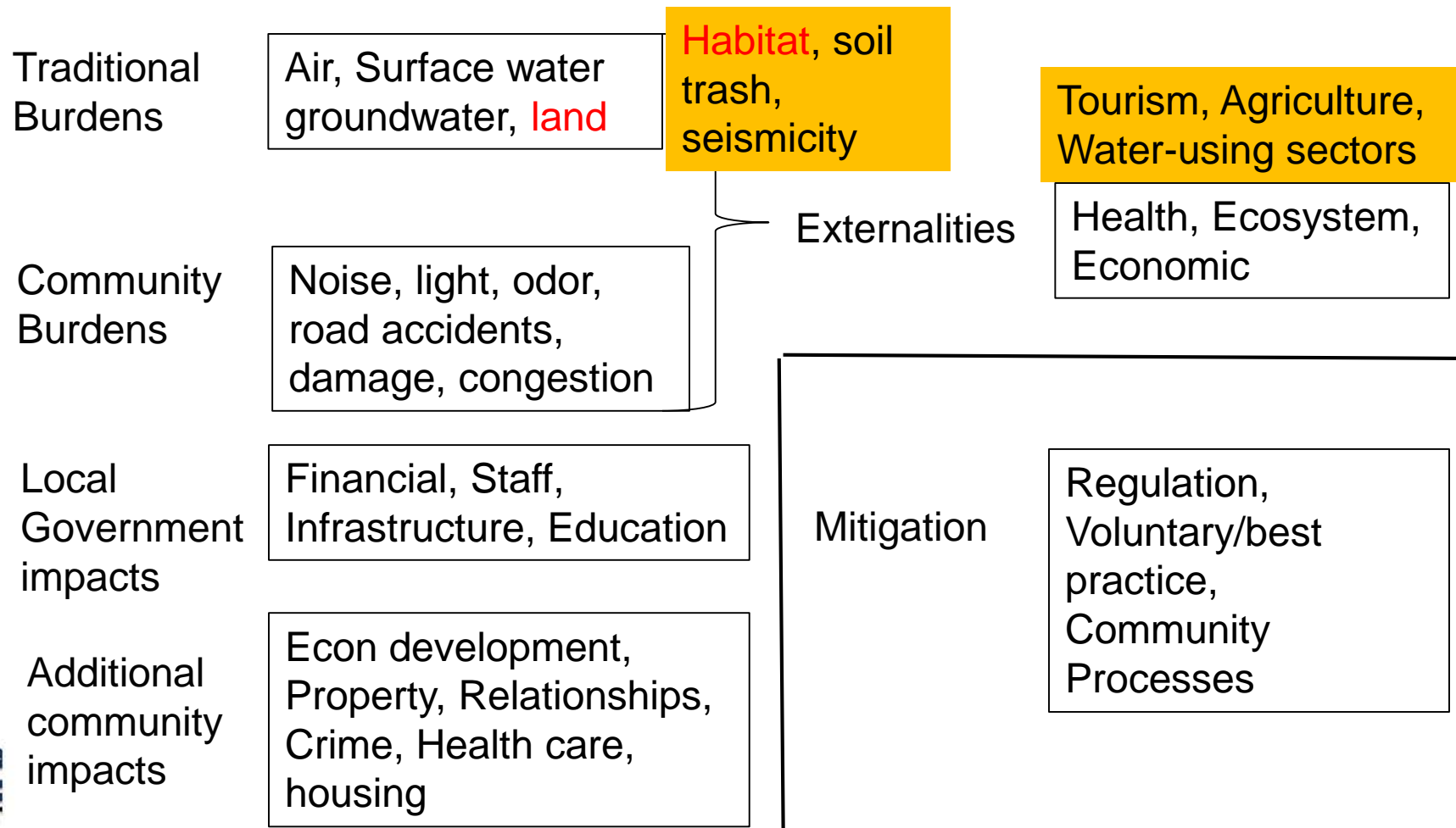
Wastewater Modeling

SGD Stages: Initial Assessment → Leasing/Permitting → Exploration → **Development** → **Production** → Plugging and Abandonment



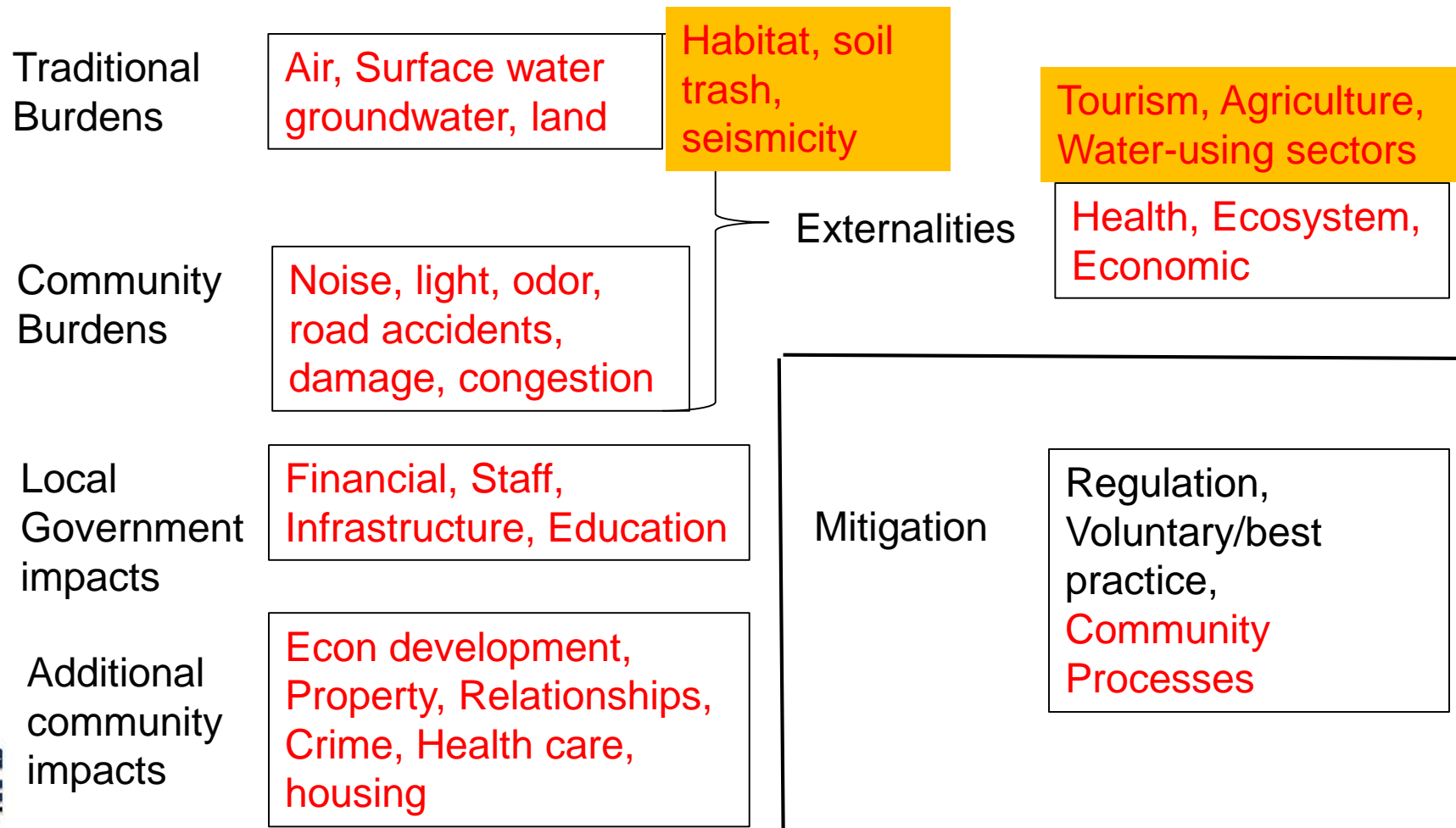
Siting and Habitat Modeling

SGD Stages: Initial Assessment → Leasing/Permitting → Exploration → Development → Production → Plugging and Abandonment



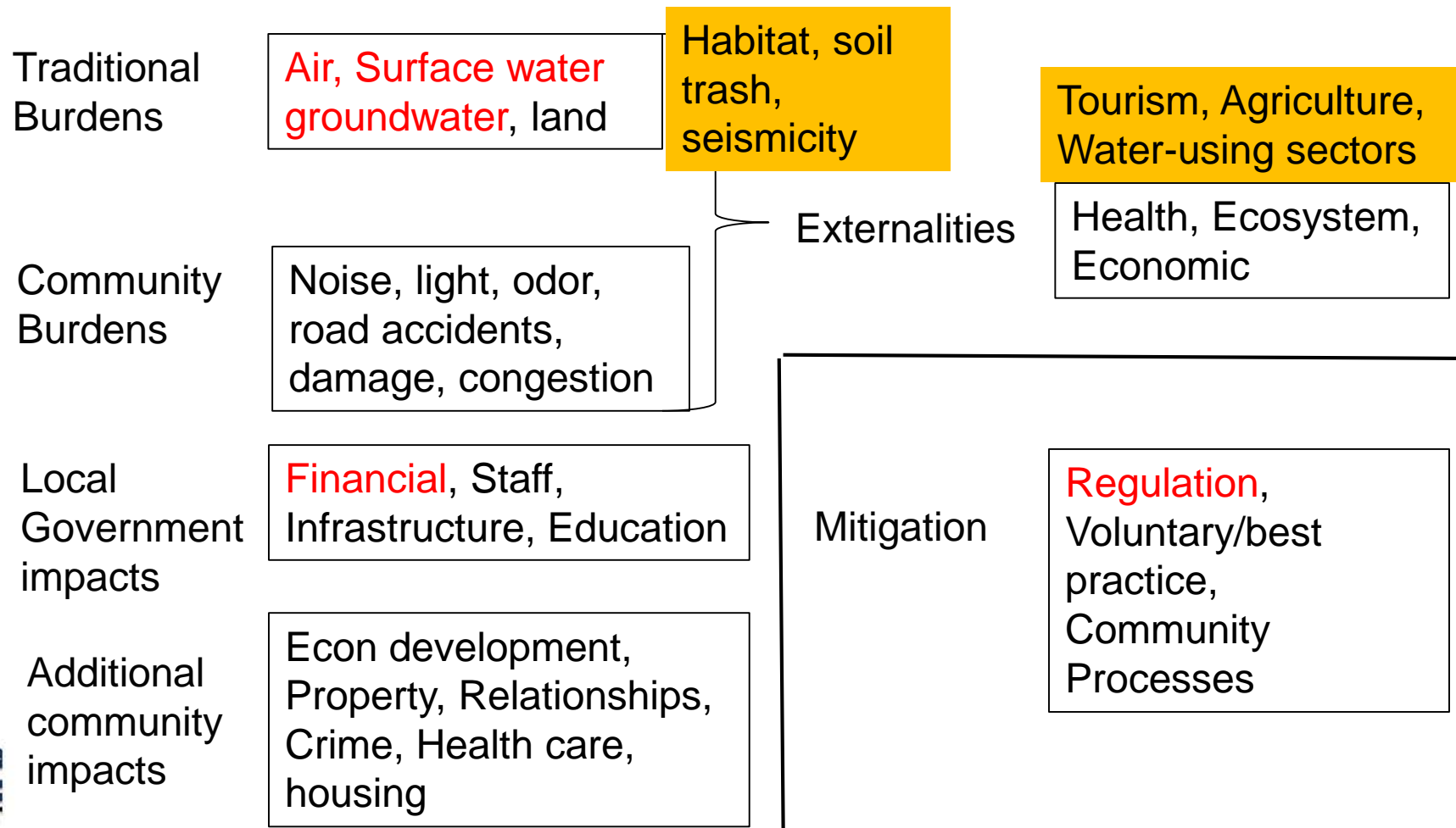
Industry/Community protocols

SGD Stages: Initial Assessment → Leasing/Permitting → Exploration → Development → Production → Plugging and Abandonment



Inactive Wells Report

SGD Stages: Initial Assessment → Leasing/Permitting → Exploration → Development → Production → **Plugging and Abandonment**



Thank you

For further questions:
Krupnick@rff.org

Shale Schools Overview

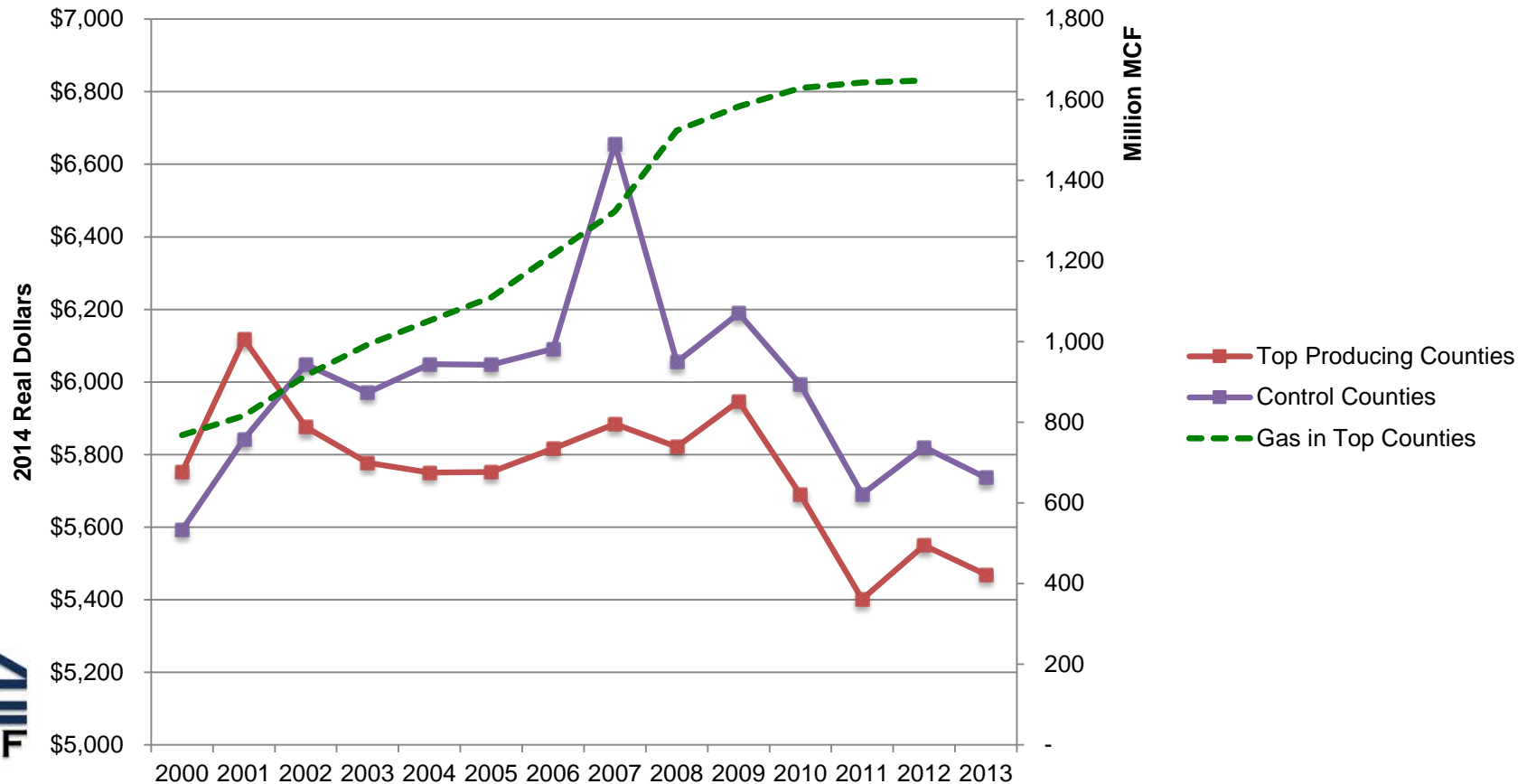
Geography: Colorado, Montana, North Dakota, Ohio, Pennsylvania, and West Virginia

Primary metrics: Student population, student/ teacher ratio, finances, dropout rate, and test scores

Methodology: Difference in difference complimented by in person interviews

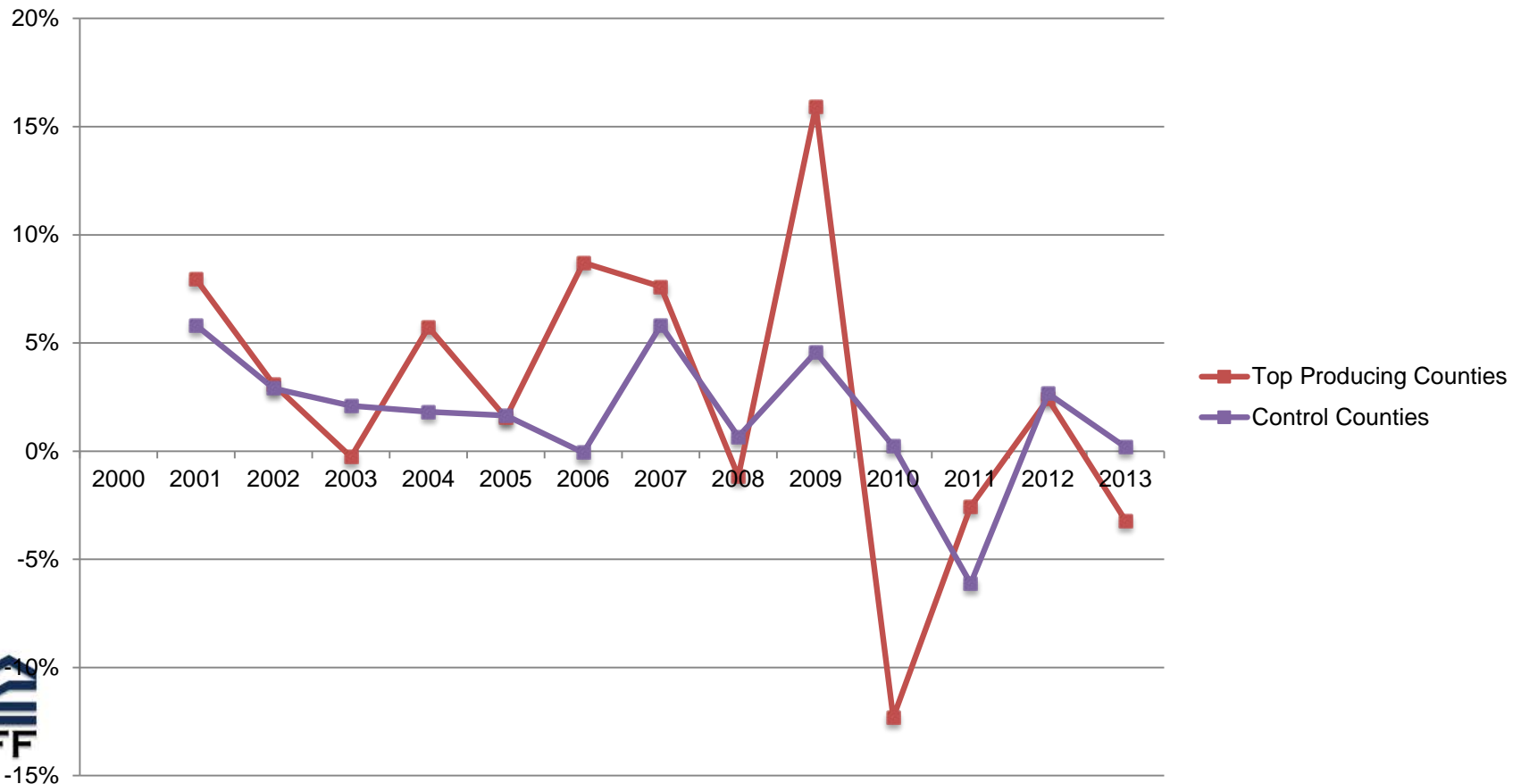
Sample State - Colorado

Instructional Expenditures - Despite an oil and gas boom, top producing counties lag control counties and have experienced a net decline since 2000.



Sample State - Colorado

Property Taxes – Property tax revenue to schools in top producing counties experienced greater year over year fluctuation.



Primary Takeaways from Bakken (ND & MT)

Interviews

Boom presented challenges related to student growth (primarily in elementary grades), student mobility (extremely high turnover / recycling), student preparation and new teacher hiring and retention. Few dropouts were reported. Financial health, particularly for new capital projects, relied on voter approval, which varied greatly by district. Interviewees frequently cited frustration with state funding mechanism (East / West divide).

Risk/Benefit Matrix and Modeling

SGD Stages: Initial Assessment → Leasing/Permitting → Exploration → **Development** → Production → Plugging and Abandonment

