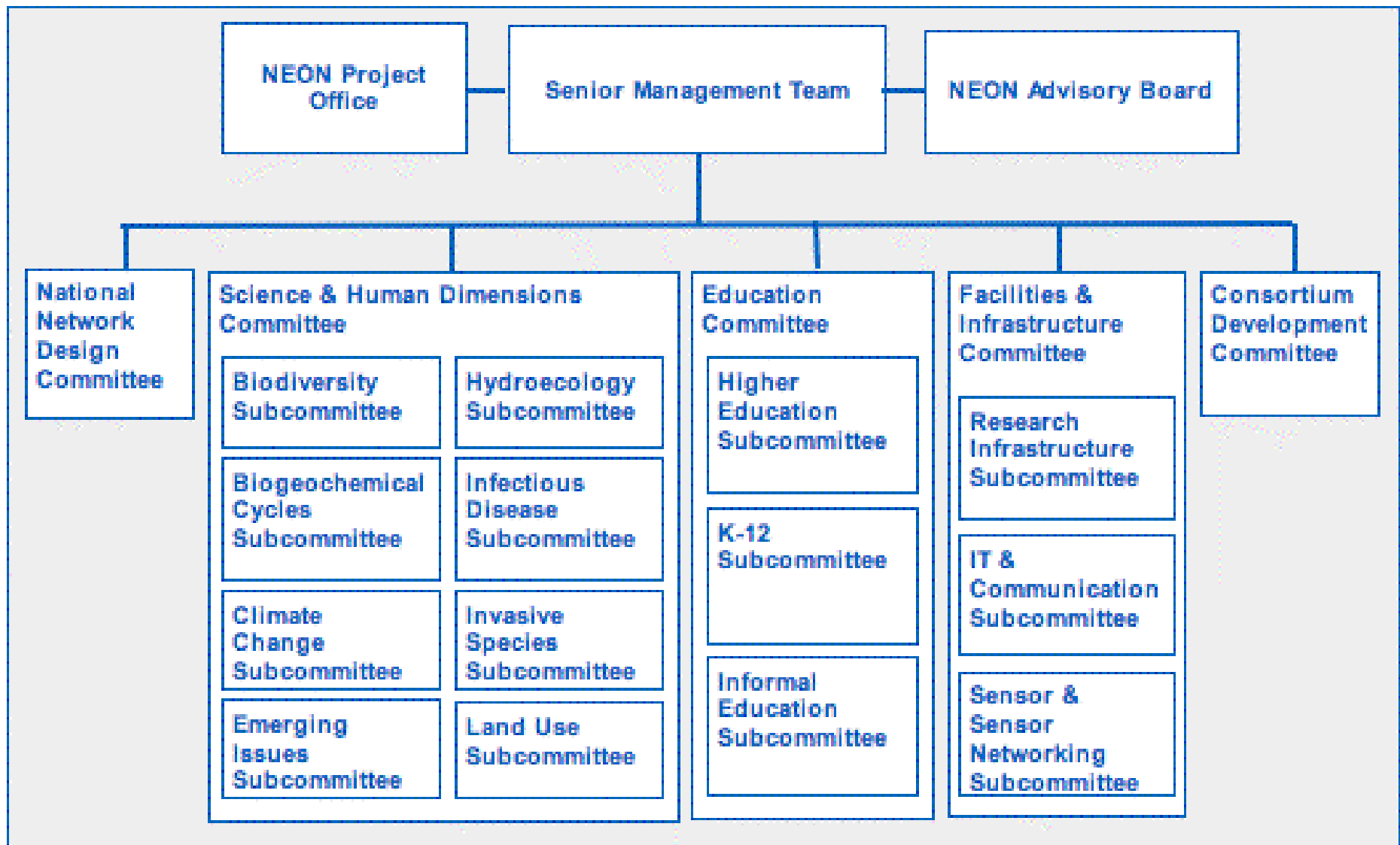


Organizational Issues

How can social scientists be organized to best integrate into Observatories?

Alan Krupnick



State of the Organizations

- CLEANER: 2 social scientists on Exec. Comm.
- CLEANER only observatory with a separate Social Science committee; social scientists on other committees
- Committee Participants: 27 social scientists of 277 members (CLEANER, CUASHI, NEON)
- NEON has most, but at same ratio
- LTER decentralized. Few sites with social scientist PI's. Network Social Science Committee

Issues

- Must work with Observatories structure. Will it evolve? Is the LTER model the future?
- Is physical centralization of SS needed? beneficial?
- How to deal with needs and collaboration over multiple disciplines within SS?

Alternative Models for Social Science

- Centralized over all observatories
- Centralized within an observatory
- Decentralized LTER model
- Decentralized: atomistic
- Hybrids
- Appropriate organization may be project/site/observatory-dependent

Breakout Questions

- Best degree of centralization for supporting observatory research?
- Allocation of SS's within observatory committee structure? By research phase: e.g., overall planning, sensor choice, problem framing, data analysis, dissemination
- How to get appropriate disciplinary representation?
- Incentives for sustaining collaboration with natural scientists and engineers?

Potential solutions

- Core organizational/administrative support
- Systems for identification of collaborators (both NS to SS and SS to SS)
 - Presentations at meetings
 - Building networks of sites
 - Data sharing across sites
 - Workshops for PIs
 - Directory of SS (on-line and searchable)