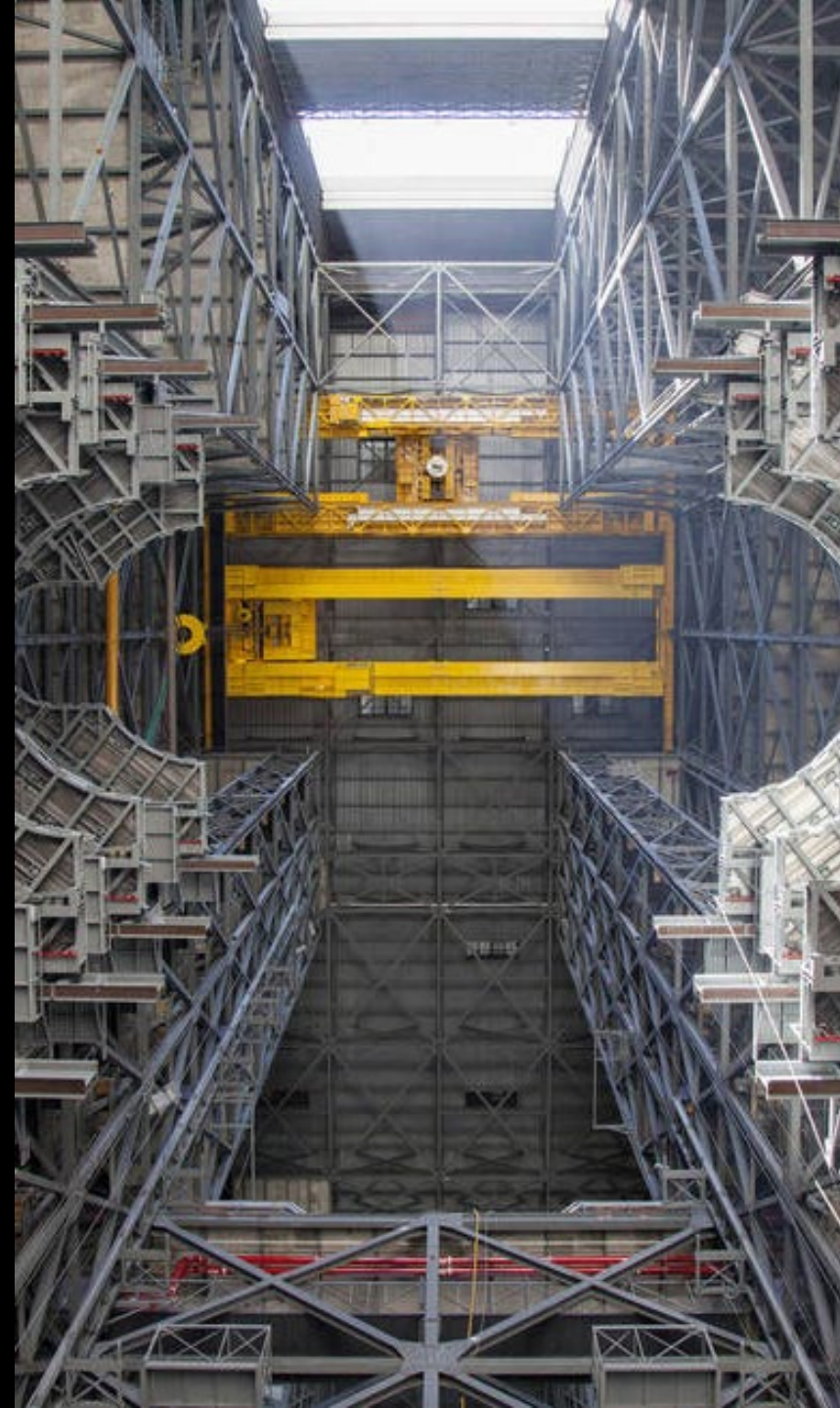


Net Zero by 2070: Decarbonizing Global Industry

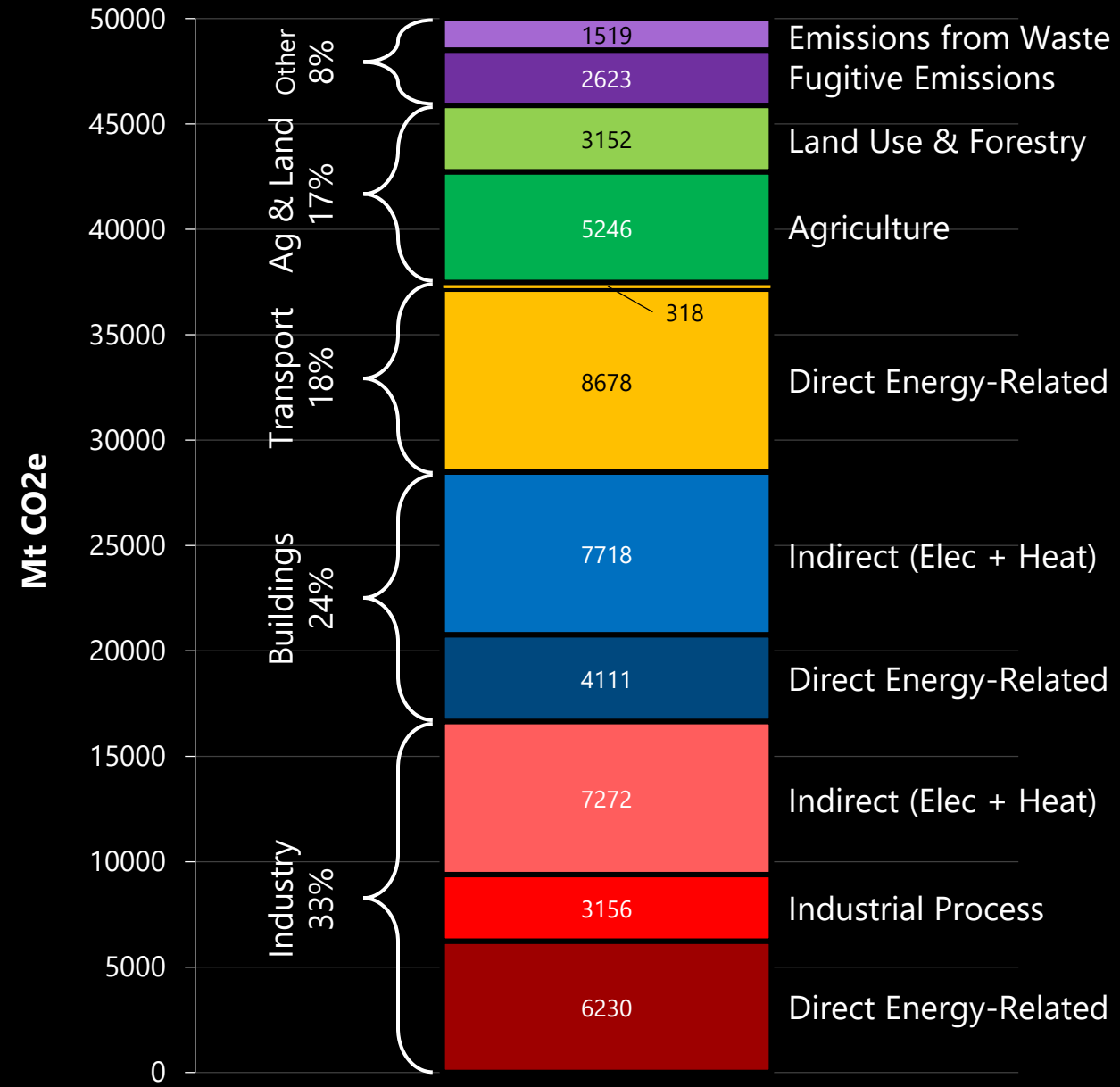
Resources for the Future webinar
April 30, 2020

JEFFREY RISSMAN

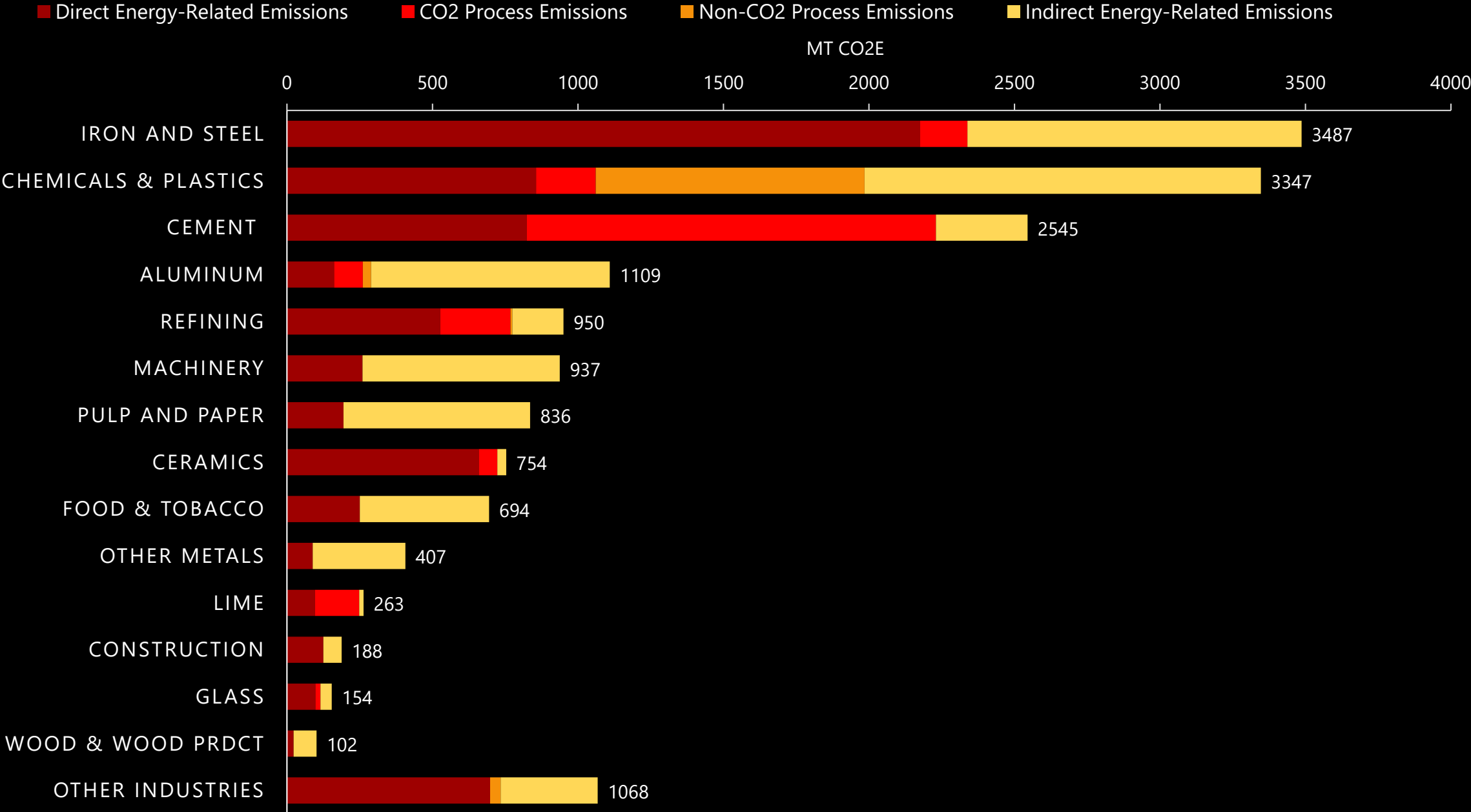
ENERGY INNOVATION 
POLICY & TECHNOLOGY LLC

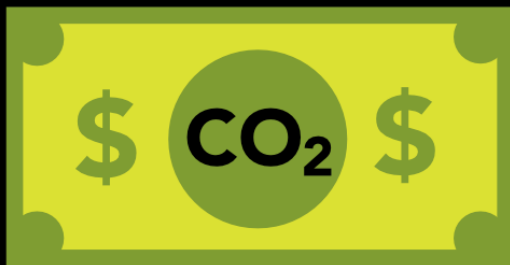


GLOBAL GHG EMISSIONS BY SECTOR IN 2014



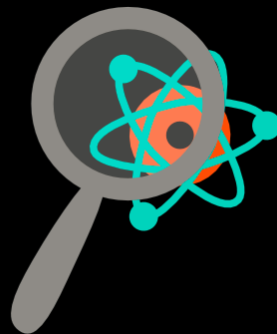
GLOBAL GHG EMISSIONS BY INDUSTRY IN 2014





CARBON PRICING

that covers all
industrial greenhouse
gas emissions



R & D

for national labs,
public-private
partnerships, and
financial incentives
for corporate R&D



STANDARDS

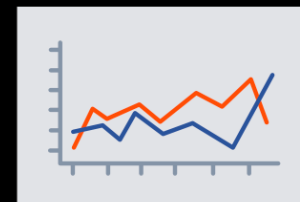
for energy
efficiency and
emissions for
industry



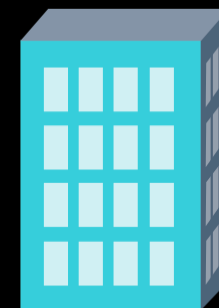
government
green
procurement
programs



labeling low-
carbon
materials



emissions data
collection &
disclosure
requirements



material-
efficient
building
codes



The Energy Policy Simulator

Released Model Adaptations

Canada

CA:
Alberta

China

CN:
Hong Kong

India

Indonesia

Mexico

Poland

Saudi
Arabia

United
States

US:
California

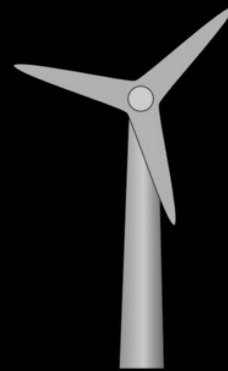
(55% of global GHG emissions)

Policies often interact nonlinearly.

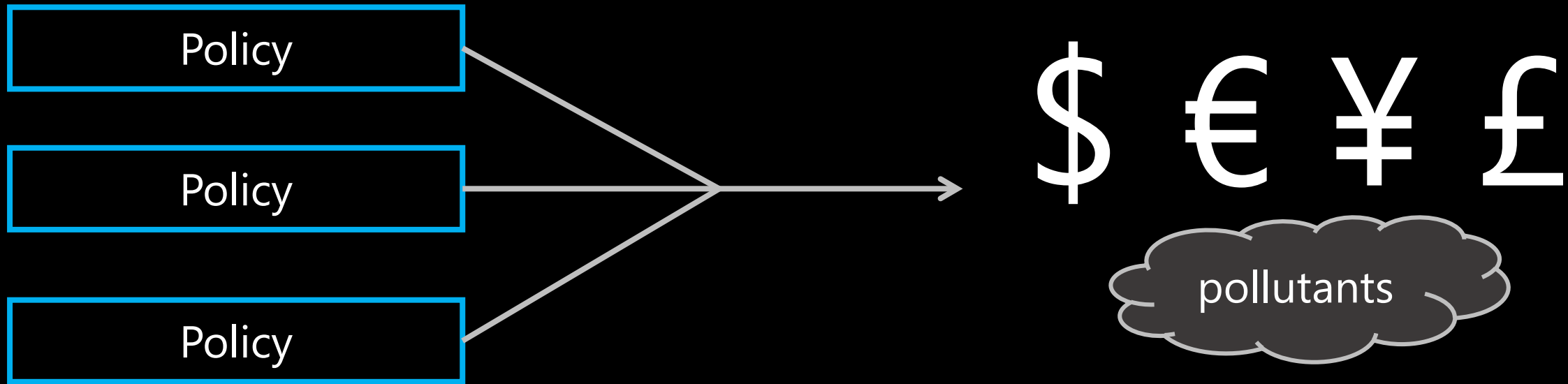
$$1 + 1 < 2$$



$$1 + 1 > 2$$



A System Dynamics model allows us to predict the combined effects of packages of policies.



EXTERNAL REVIEWERS, ADVISERS, AND CONTRIBUTORS

Global Partners

National Labs



Universities



IMAGE SOURCES

Title slide, left side:

Peter Hess, Creative Commons Attribution 2.0

<https://www.flickr.com/photos/peterhess/16875011947>

Title slide, right side:

NASA, public domain

<https://www.nasa.gov/feature/nasa-reaches-platform-milestone-at-kennedy-space-center-for-space-launch-system>

Earth from space:

NASA Goddard Space Flight Center, Creative Commons Attribution 2.0

<https://www.flickr.com/photos/gsfc/8246892319/in/photostream/>

Global Industry Sector CO2 Emissions

